



471 INDUSTRIAL AVE.  
RIPON, CALIF. 95366  
PHONE (209) 599-6118

**JACKRABBIT**  
**SERVICE PARTS**

**JUMPING JACK ELEVATOR**

**JJL 490 20/20 ELEVATOR**



10/18/10

Phone (209) 599-6118 Fax (209) 599-6119  
E-mail [sales@jackrabbit.bz](mailto:sales@jackrabbit.bz) or [info@jackrabbit.bz](mailto:info@jackrabbit.bz)

## TO OUR CUSTOMERS:

Thank you for choosing JackRabbit. We stand behind our products and are very proud of the equipment we design and manufacture. Preventive maintenance is the easiest and least expensive type of maintenance. Please take the time to review this Owner's Operator's Manual it can save you time and expense.

## WARRANTY

JACKRABBIT warrants each new piece of equipment and parts manufactured by it to be free from defects in material and workmanship under normal use and service. The obligation of JACKRABBIT shall be limited to replacing any part which shall, within 1 year (1 season) after delivery to the original purchaser, be returned to JACKRABBIT with transportation charges prepaid and which an examination by JACKRABBIT discloses defective. This Warranty does not obligate JACKRABBIT to bear the cost of labor, travel time or hauling in connection with the replacement or repair of the defective parts and in no event will be liable for consequential damages including but not limited to loss of crop, rental or substitute equipment or other commercial loss.

No warranties or representations made by persons other than representatives of JACKRABBIT expressly authorized in writing to do so shall be valid and binding upon JACKRABBIT. No dealer shall be authorized to bind JACKRABBIT in this respect.

JACKRABBIT makes no warranty with respect to component parts not manufactured by JACKRABBIT. This warranty shall not apply to any equipment which has been altered in any way outside of manufacturers factory, or which has been subject to misuse, neglect or accident.

**This warranty is expressly in lieu of all other warranties and representations, expressed, implied, or statutory, including warranties of merchantability and fitness for a particular use, and all other liabilities or obligations on the part of JACKRABBIT, foreseeable or not.**

## USER'S RESPONSIBILITY

It is the responsibility of the user to read the Operator's Manual and understand the safe and correct operating procedures as pertains to the operation of the product and to lubricate and maintain the product according to the maintenance schedule in the Operator's Manual.

## WARRANTY SERVICE

Warranty service may be obtained through an authorized dealer or JackRabbit service facility. Write or call: JackRabbit, 471 Industrial Ave, CA 95366, telephone (209) 599-6118

## TABLE OF CONTENTS

	Page
<b>A. Incline conveyer section</b>	<b>1 - 4</b>
<b>B. Bin conveyer section</b>	<b>5 - 6</b>
<b>C. Engine section</b>	<b>7 - 11</b>
<b>D. Electrical schematic</b>	<b>12</b>
<b>Electrical gauges &amp; switches</b>	<b>13 - 15</b>
<b>E. Hydraulic schematic</b>	<b>16</b>
<b>Hydraulic parts list</b>	<b>17 -19</b>
<b>F. Bearings list</b>	<b>19</b>
<b>G. Belt list</b>	<b>20</b>
<b>H. Decals list</b>	<b>20</b>
<b>I. Miscellaneous parts list</b>	<b>20</b>
<b>J. Front wheel drive option</b>	<b>21 - 24</b>

**PARTS LIST**

**490 JIL 20/20 ELEVATOR**

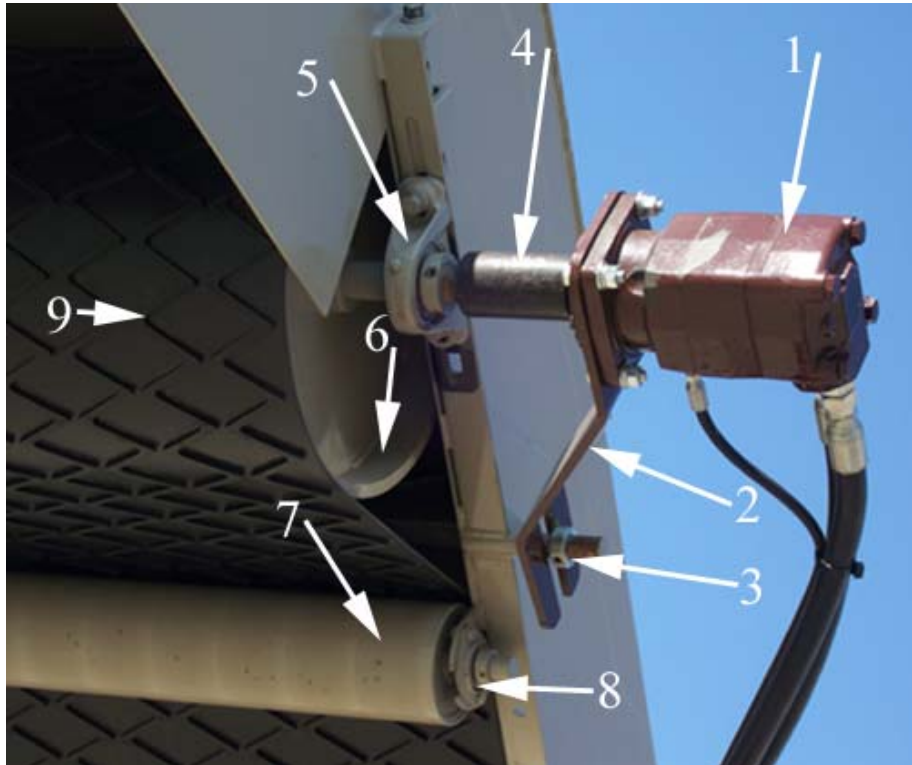
<b>ITEM #</b>	<b>PART #</b>	<b>DESCRIPTION</b>	<b>SERIAL#</b>	<b>REQD.</b>
<b>INCLINE CONVEYOR SECTION</b>				
1	26034	Incline Conveyor Motor (OMT500)	66-115,120,130----	1
	26034	Incline Conveyor Motor (DT 3306 328D)	116-119&121	1
	26034A	Seal kit for (OMT500) #M4151239000		1
	24409	Incline Conveyor Motor (RE320804)	1-65	1
2	25996	Upper Torque Arm		1
3	27352	Clamping Collar		1
4	26812	Coupler Solid 1-1/2" ID		1
	22495	Climax Coupler 1-1/4" ID for RE18 Motor	1-95	1
5	22097	Bearing (1-1/2" Pillow Block)		2
6	24344	Upper Drive Pulley 20" w/lag		1
	26055	Shaft (1-1/2" x 28-1/2") length – new		1
	24254	Shaft (1-1/2" x 28-1/2") length – old		1
7	24374A	Snub Roller		1
8	23524	Flangette Bearing (#52 MST 22PPRAG) for snub roller		2
	23524A	RA 100 RRB COL AG Bearing		2
9	27376	(20" x 64' 6") Giant Z Incline Belt	1-129 & 207---	1
	27756	(20" x 64' 6") Giant Z Incline Belt	130-206	1
	24410	(20" x 64' 4")Crescent Top Incline Belt	1-129 & 207---	1
	27523	20" Pin For Lacing		1
10	25070	Idler Roller 20 3/8" return		6
11	27307	Bearing Housing for return rollers (end cap)		12
12	27306	Bearings for return rollers		12
13	28215	Shaft & Spring for 20 3/8"return roller		6
14	24556	Belt Wiper (UHMW) 27-3/4"		2
15	22977	Bearing (1" pillow block)		2
16	24341A	Idler Pulley, lower 20 1/4" w/lag		1
17	24923	Slide Spacer UHMW (for 20/20)		2
18	28120	Transition Seal, incline belt (UHMW)		2
19	24659	Brushes and Holder Assembly		6
	24653	Brushes only		6
	24654	Brush Holder only		6

**490 JYL 20/20 ELEVATOR**

<b>ITEM #</b>	<b>PART #</b>	<b>DESCRIPTION</b>	<b>SERIAL#</b>	<b>REQD.</b>
20	27227	Transition Side seal (for 20/20)	1999	1
21	26765	Transition Side Seal		1
22	26765A	Transition Side Seal		1
26	31067	FC 350 1 1/2" Bearing		1
28		Incline Pan 21"X 114" (Welded to Incline Sides)		1

Cleated belts, snub and idler rollers for cleated belts are obsolete, but can be special ordered.

**INCLINE CONVEYOR SECTION 20/20**

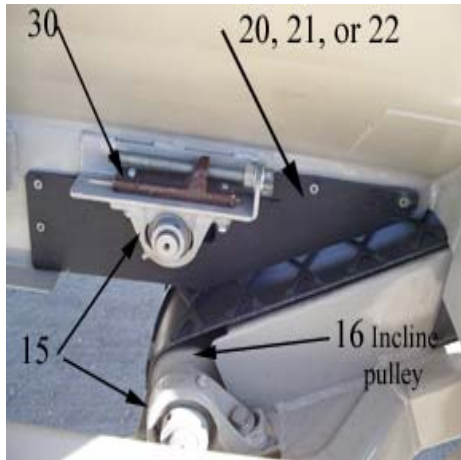
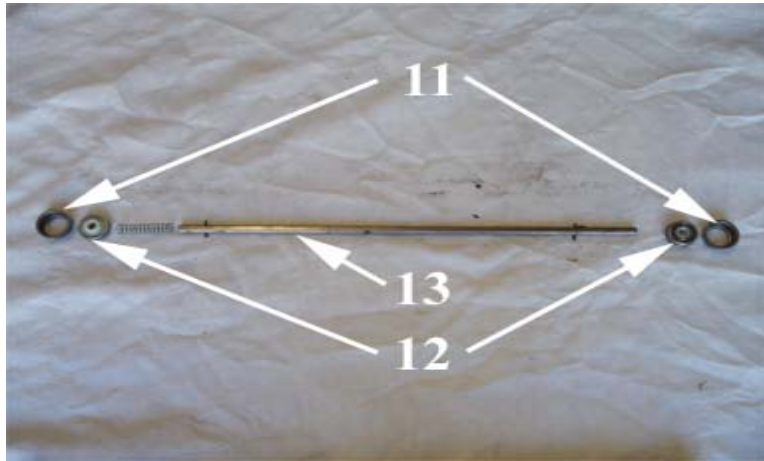


490 JYL 20/20 ELEVATOR

ITEM # PART # DESCRIPTION

SERIAL# REQD.

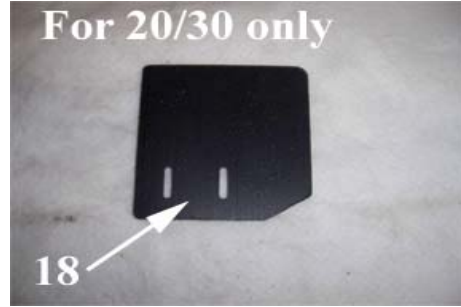
INCLINE CONVEYOR SECTION CONT.



490 JYL 20/20 ELEVATOR

ITEM # PART # DESCRIPTION  
INCLINE CONVEYOR SECTION CONT.

SERIAL# REQD.



**490 JYL 20/20 ELEVATOR**

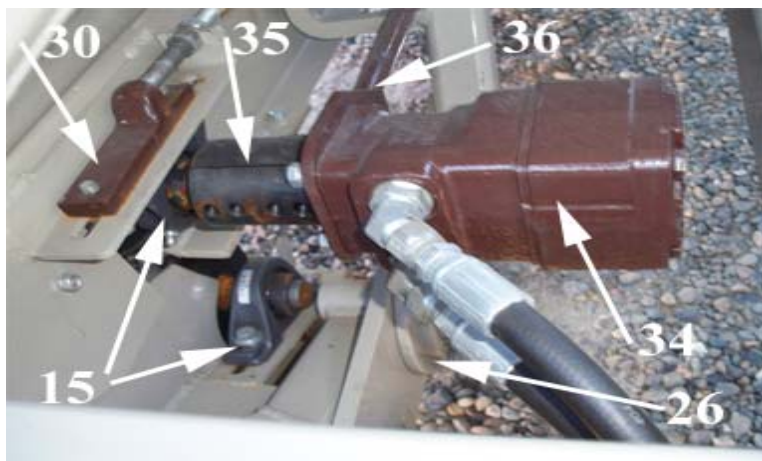
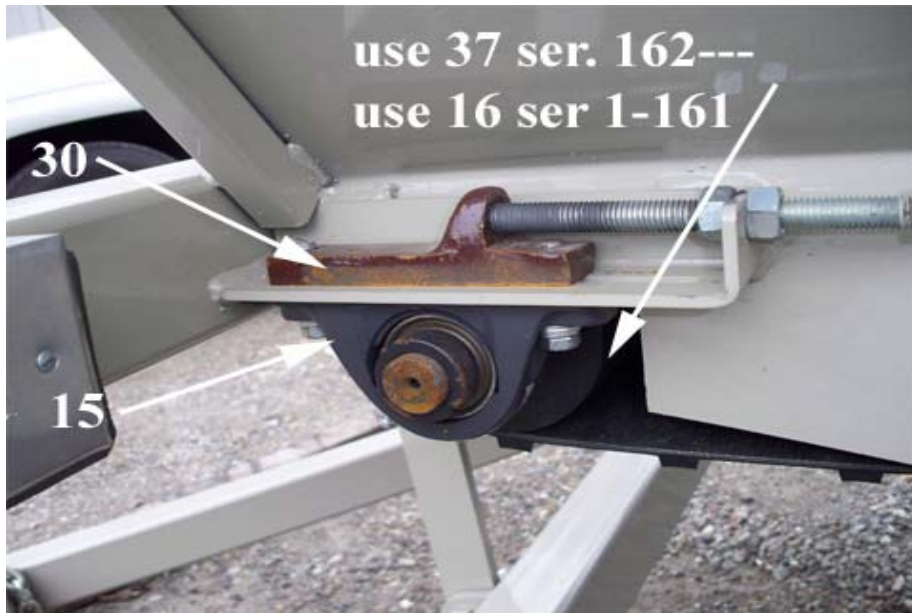
<b>ITEM #</b>	<b>PART #</b>	<b>DESCRIPTION</b>	<b>SERIAL#</b>	<b>REQD.</b>
<b>BIN CONVEYOR SECTION</b>				
15	22977	Bearing, 1" pillow block		4
16	24341A	Idler Pulley lower 20 1/4" w/lag	162---	0
26	31067	FC350 1 1/2" Bearing		2
30	26464	Bearings Pad		2
33	27377	(20" x 318") Giant Z Bin Belt	115---	1
	27115	(20"x 317") Crescent Top Bin Belt	115---	1
	27530	(20" x 294") Giant Z Bin Belt	1-114	1
	24411	(20" x 293") Crescent Top Bin Belt	1-114	1
33A	27523	20" Lacing Pin		1
33B	24556	Belt Wiper 27 3/4"		1
34	24664	Lower Hyd. Motor (RS180201)	162---	2
	24664	(RS180106)	115-129	1
	24664A	Seal Kit Motor for (RS180201)	100---	1
35	26493	Motor Coupler (climax coupler CC100-100)	162---	2
	24416	Motor Coupler 1" dia 6 spline	1-99	1
36	24395	Lower Torque Arm	162---	2
37	24340A	Lower Drive Pulley, w/lag	162---	2
38	24368	20"x 27 1/2" Rear Skid Pan		1
39	24369	20" x 45 1/2" Center Skid Pan		1
40	24371	20" x 64 1/2" Front Skid Pan		1
41	24657	20 3/8" x 18 1/2" Lower Extension Pan		1
	24557	Lower Extension Pan		1
42	24662	23 1/2" x 21 3/8" Extension Upper		1
43	26045A	20" Bin Extension Upper ( new )		1

Items # 38 – 43 are (replacement) formed sheet metal parts that are welded into bin frame.

**490 JYL 20/20 ELEVATOR**

**ITEM #      PART #      DESCRIPTION**  
**BIN CONVEYOR SECTION CONT.**

**SERIAL#    REQD.**



**490 JYL 20/20 ELEVATOR**

<b>ITEM #</b>	<b>PART #</b>	<b>DESCRIPTION</b>	<b>SERIAL #</b>	<b>REQD</b>
<b>ENGINE PARTS:</b>				
100	27014	Air Filter Inner (Don. P829332)	116---	1
101	27013	Air Filter-Outer (Don. P827653)	116---	1
101A	27015	Air Filter Assembly G0700018	116---	1
101B	27015A	Air Filter Mounting Band P777731	116---	1
101C	27015B	Air Filter Vacuator P158914	116---	1
101D	28795	Restriction Indicator (Duetz)	162---	1
102	27013A	End Cover (P636202)	116---	1
100	26774	Air Filter Safety Element (118-0869)	100-115	OBS
101	26773	Air Filter Primary (131-9142)	100-115	OBS
101	27117	Air Filter (438 4102)	1-99	1
103	27531	Conversion Kit To Donaldson Filters	1-115	1
104	27011	Fuel Filter (Duetz 117-4696), L1101 &2011	1---	1
104A	27943	Fuel Strainer in line (117-8753)		1
105	27010	Oil Filter (Duetz 117-4416), F2L1101 &2011	1---	1
106	27168A	Fan Belt (Duetz117-9566), F2L2011	207---	1
	27168	Fan Belt (Duetz117-9565) (4 CYL)	1-206	1
107	27202B	Fuel Shut Off Solenoid (427-2956), L2011	207---	1
	27202C	Wiring Connector Cable (421 3069)	207---	1
	27202	Fuel Shut Off Solenoid (427-0581)	1-206	1
	27202A	Fuel Shut Off Solenoid (427 -2733)		1
		O-Ring 116-4748 for (427- 2733)		1
	27202D	Fuel Shut off Solenoid (0428-7583)		1
107A	27351A	Wiring Loom For Fuel Shut Off Solenoid (F2L2011) 207--- (421-8069) for F2L12011		1
107B	27351	Wiring Loom For Fuel Shut Off Solenoid (5A 22001649)	1-206	1
109	27203C	Fuel Pump (428-6113), F2L,F3L,F4L2011	207---	1
	27203	Fuel Pump (0417-5474), L1011	1-206	1
	27203A	Fuel Pump (0427-1682) or (427-2819), 2L1011		1
	27203B	O-Ring (117-9160)	1---	1
110	27492	Fuel Injector Return Line Kit 0417-8631, 3cyl	1---	1
	27492A	Fuel Injector Return Line 0417-8632, 2cyl	1---	1

**490 JYL 20/20 ELEVATOR**

<b>ITEM #</b>	<b>PART #</b>	<b>DESCRIPTION</b>	<b>SERIAL#</b>	<b>REQD.</b>
<b>ENGINE PARTS CONT:</b>				
112	24744	Throttle Solenoid W/Module	1-175---	1
113	24744A	Throttle Solenoid	1-175---	1
114	24744B	Trombete Module	1-175---	1
113A	27654	Solenoid Rubber Boot		1
115	27656	Throttle Solenoid (1756E)	176---	1
116	27655	Trombete Module (P515 A57 12V)	176---	1
116	27657	Coil Commander (SA4667)	176---	1
115A		Solenoid Rubber Boot		1
117	27310	Throttle Linkage Kit, assembly		1
	24744C	Ball Joint, 90 degree		1
	24744D	Hex Spacer		1
	24744E	Straight Connection		1
118	27776	Throttle Lever 417- 9754 for Duetz 1011		1
120	27803	Alternator Rebuilt Duetz		1
	27803A	Alternator New 01182434 for 2,3,4 Cyl Eng.		1
137	25026	Exhaust Pipe		1
	24752	Exhaust Pipe Hanger		1
		1 <sup>3</sup> / <sub>4</sub> " u Bolt Clamp		1
138	27285	Gas Shock for Engine Door		1
139	27959	Rubber Ring Isolator Duetz Engine		1
140	27407	Oil Cooler For 3 Cylinder Engine		1
141	27876A	Oil Pressure Sender (CH86281) three prong	207---	1
	27876	Oil Pressure Sender (118-1549) one prong	1-206	1
See Item # 155 for oil temperature gauge and oil temperature sender				
142	22424	Hour Meter		1

**490 JYL 20/20 ELEVATOR**

<b>ITEM #</b>	<b>PART #</b>	<b>DESCRIPTION</b>	<b>SERIAL#</b>	<b>REQD.</b>
---------------	---------------	--------------------	----------------	--------------

**REPLACEMENT ENGINES:**

<b>145</b>	<b>F2L2001</b>	<b>Engine 2 Cylinder Engine,</b>		<b>1</b>
	<b>F3L2011</b>	<b>Engine 3 Cylinder Engine</b>		<b>1</b>
	<b>F4L2011</b>	<b>Engine 4 Cylinder Engine</b>		<b>1</b>

**ORDER A DRIVE PLATE KIT #27762 WITH NEW ENGINE, IF SERIAL NUMBER OF ELEVATOR IS #1 THROUGH 149.**

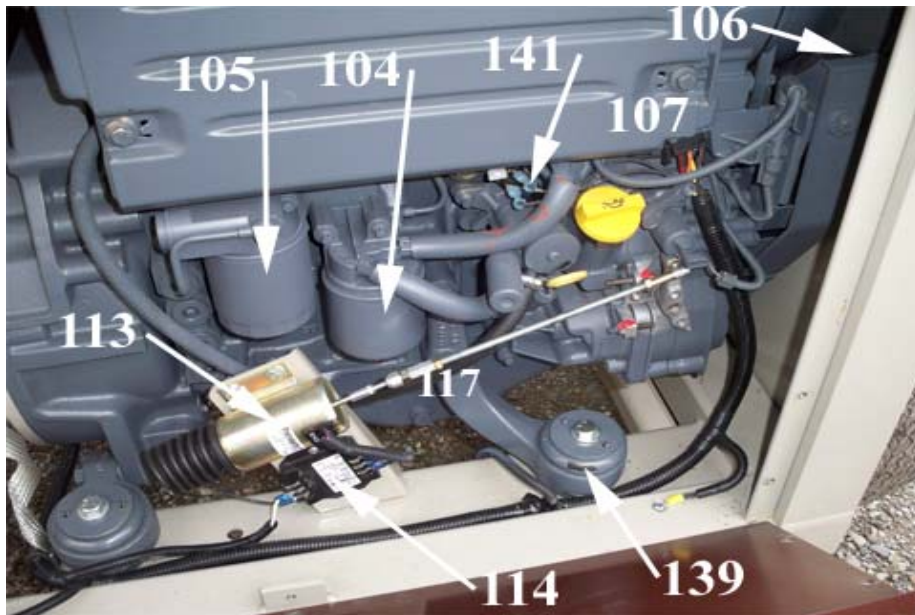
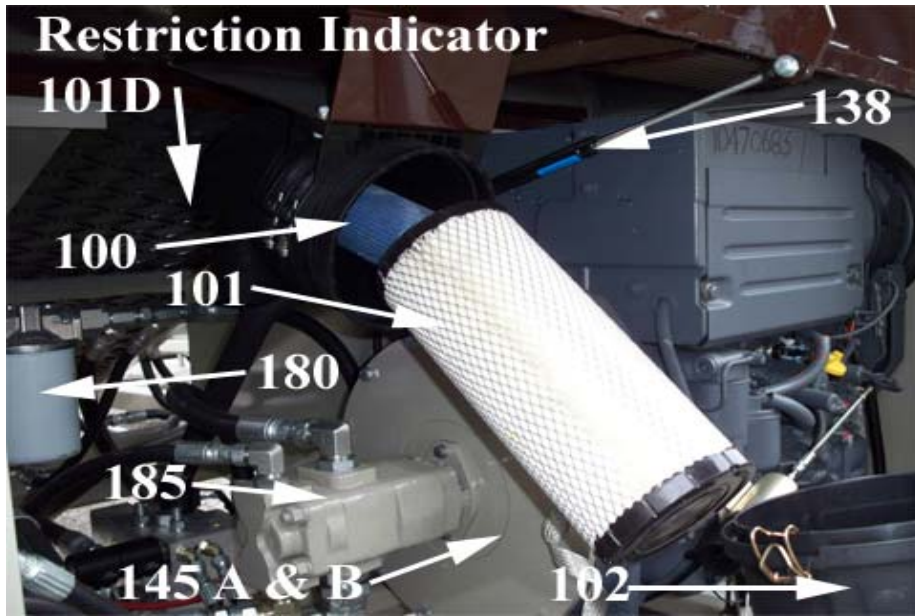
<b>145A</b>	<b>27762</b>	<b>Drive Plate Kit, (Drive &amp; Bell Housing Cover) 123 655 for F2L2011, F3L2011, F4L2011engines. Year 2000 and after, serial 150 and after.</b>		
<b>142B</b>	<b>27762A</b>	<b>Drive Plate Kit, (Drive &amp; Bell Housing Cover) 123296 123076 for F2L1011, F3L1011, F4L1011 engines. Year 1999 and before, serial # 1 through 149.</b>		
<b>155</b>	<b>27131A</b>	<b>Oil Temperature Gauge (118-2577) F3L 2"hole</b>		<b>1</b>
	<b>27131</b>	<b>Oil Temperature Gauge (117-9304)</b>		<b>1</b>
	<b>27632B</b>	<b>Oil Temperature Sender (118-0413)</b>	<b>207---</b>	<b>1</b>
	<b>27132</b>	<b>Oil Temperature Sender (117-3672)</b>	<b>1-206</b>	<b>1</b>

**For a complete list of Duetz engine parts see your Duetz engine parts manual.**

490 JIL 20/20 ELEVATOR

ITEM # PART # DESCRIPTION  
ENGINE SECTION

SERIAL# REQD.



490 JYL 20/20 ELEVATOR

ITEM # PART # DESCRIPTION

SERIAL# REQD.

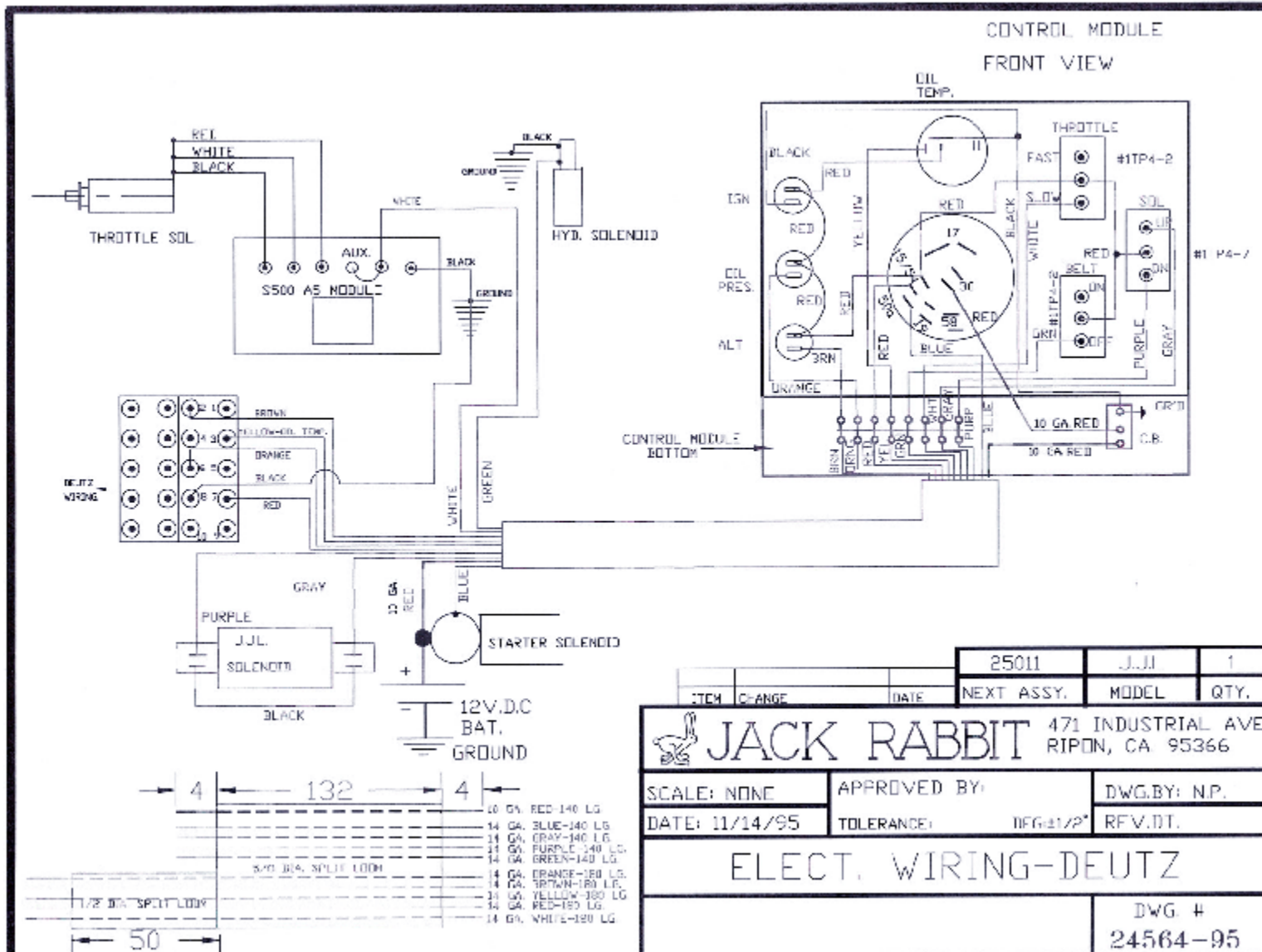
ENGINE SECTION



490 JJL 20/20 ELEVATOR

ITEM # PART # DESCRIPTION

SERIAL # REQD



ITEM	CHANGE	DATE	25011	J.J.J	1
			NEXT ASSY.	MODEL	QTY.
<b>JACK RABBIT</b>			471 INDUSTRIAL AVE RIPON, CA 95366		
SCALE: NONE		APPROVED BY:		DWG.BY: N.P.	
DATE: 11/14/95		TOLERANCE:		DIFF: ±1/2" RFV.DT.	
ELECT. WIRING-DEUTZ					
				DWG #	
				24564-95	

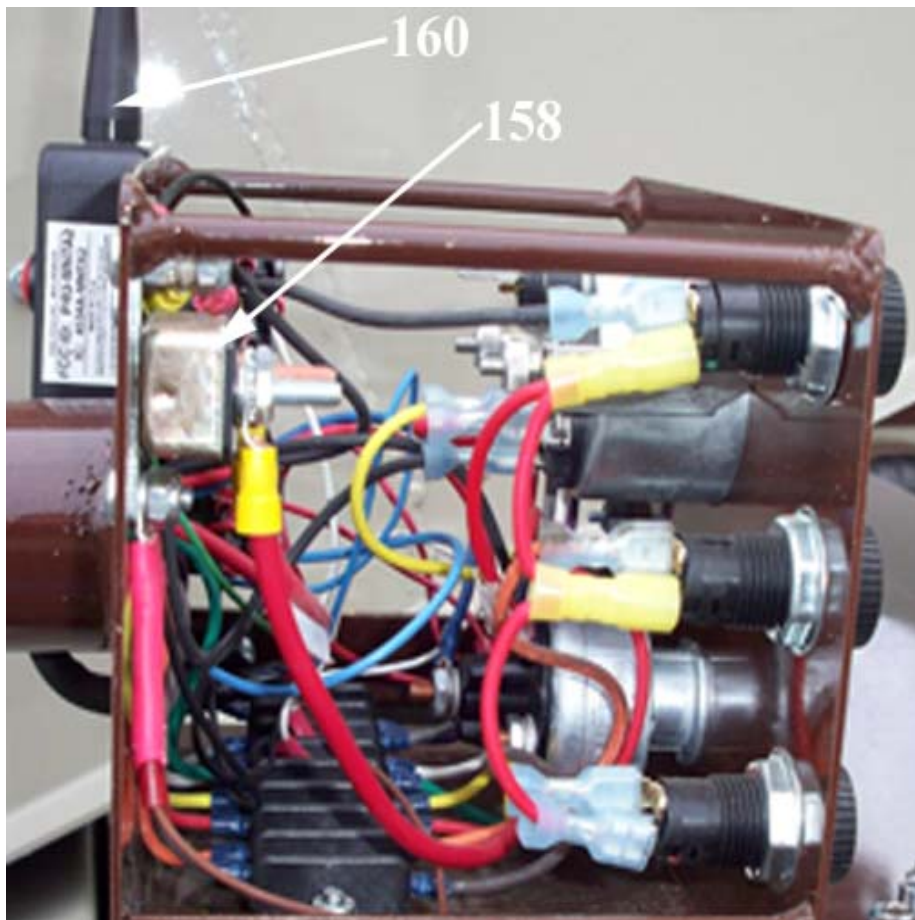
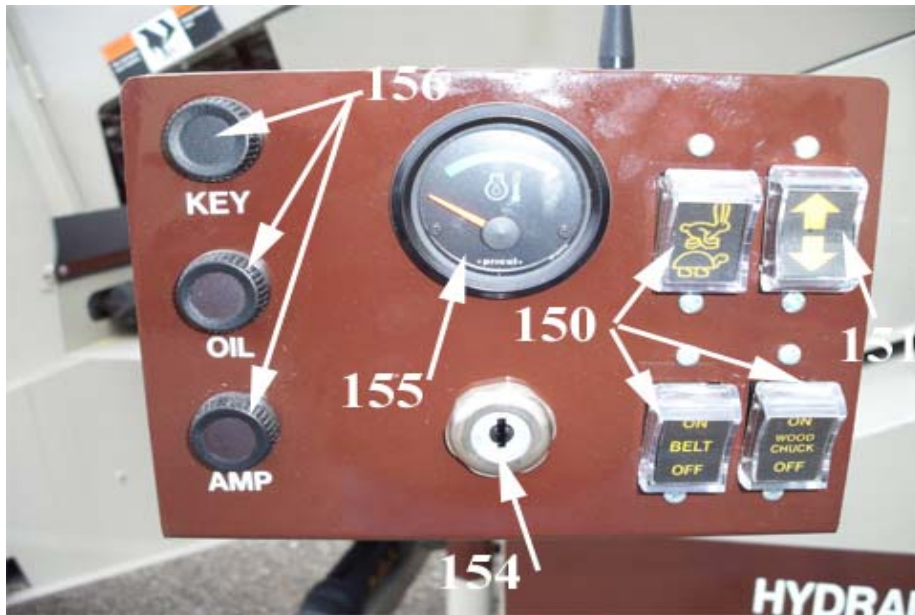
**490 JYL 20/20 ELEVATOR**

<b>ITEM #</b>	<b>PART #</b>	<b>DESCRIPTION</b>	<b>SERIAL #</b>	<b>REQD</b>
<b>ELECTRICAL:</b>				
150	26403	Rocker Switch (#1TP4-2) Throttle		2
151	27118	Rocker Switch Momentary (#1TP4-7) Jack & Chute		1
152	27527	Toggle Switch (#1TL1-2)		1
153	27528	Push Button Switch (#90030) @ end of bin		1
	28213	Toggle Switch (1NT1-7) @ end of bin		1
154	27121	Key Switch (Deutz Ing.) 117-6269)		1
	27122	Key Switch Double Cut (Duetz #302-735)		1
	22416	Key Switch (Polak #31-196)	130-186	1
	22416A	Key Polak for 22416		1
	27119	Key Single Cut (#116-4422) for 26121		1
	27120	Key Double Cut Duetz #302-736		1
155	27131A	Engine Oil Temperature Gauge (#118 2577) 2" hole		1
	27131	Engine Oil Temperature Gauge (#117-3670)		1
	27632A	Engine Oil Temperature Sender (#118-0413)	201---	1
	27632	Engine Oil Temperature Sender (#117-3672 )	1-200	1
	27876A	Oil Pressure Sender (CH86218) three prong	207---	1
	27876	Oil Pressure Sender (118-1549) one prong	207---	1
156	27145	Deutz Idiot Light Assembly		1
157	27123	Light Bulb Only		1
158	27787	Circuit Breaker Cole Hersee 30055-6 5 AMP		1
	26399	Circuit Breaker 30 AMP		1
159		Relay		2
160	28246	Remote Control Transmitter		1
160	28247	Remote Control Receiver		1
161	24564-00	Electrical Wiring Schematic For Duetz Engine		1

490 JYL 20/20 ELEVATOR

ITEM #      PART #      DESCRIPTION

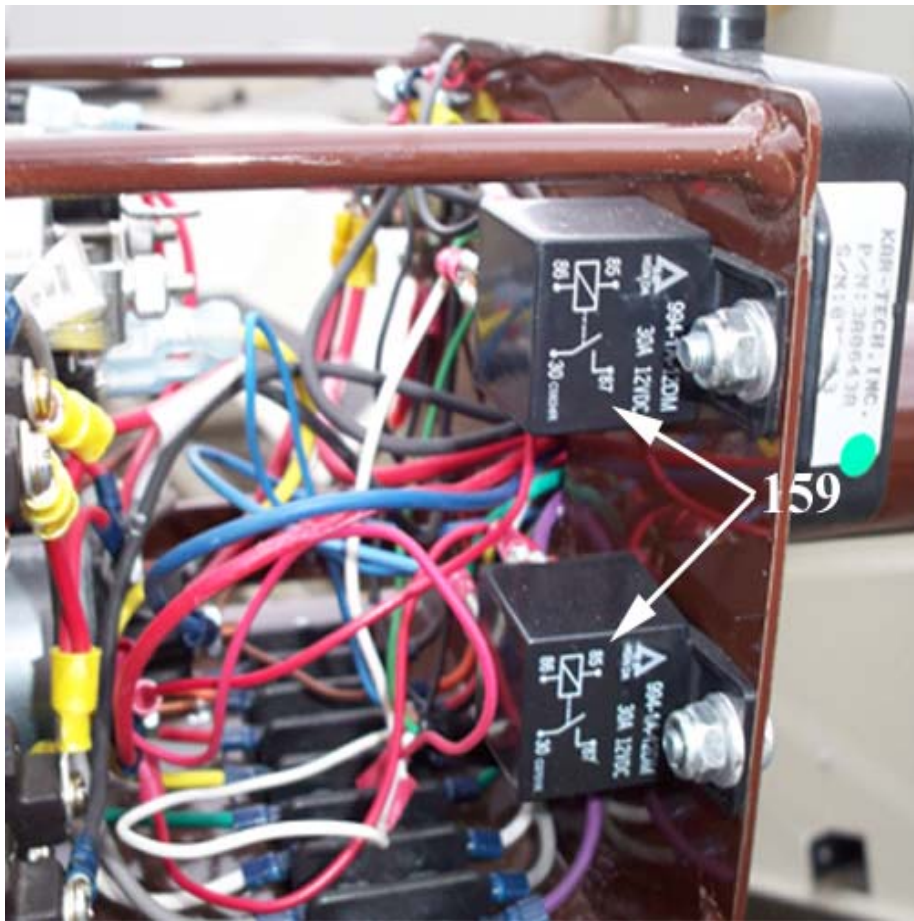
SERIAL #      REQD



490 JYL 20/20 ELEVATOR

ITEM #      PART #      DESCRIPTION

SERIAL #      REQD

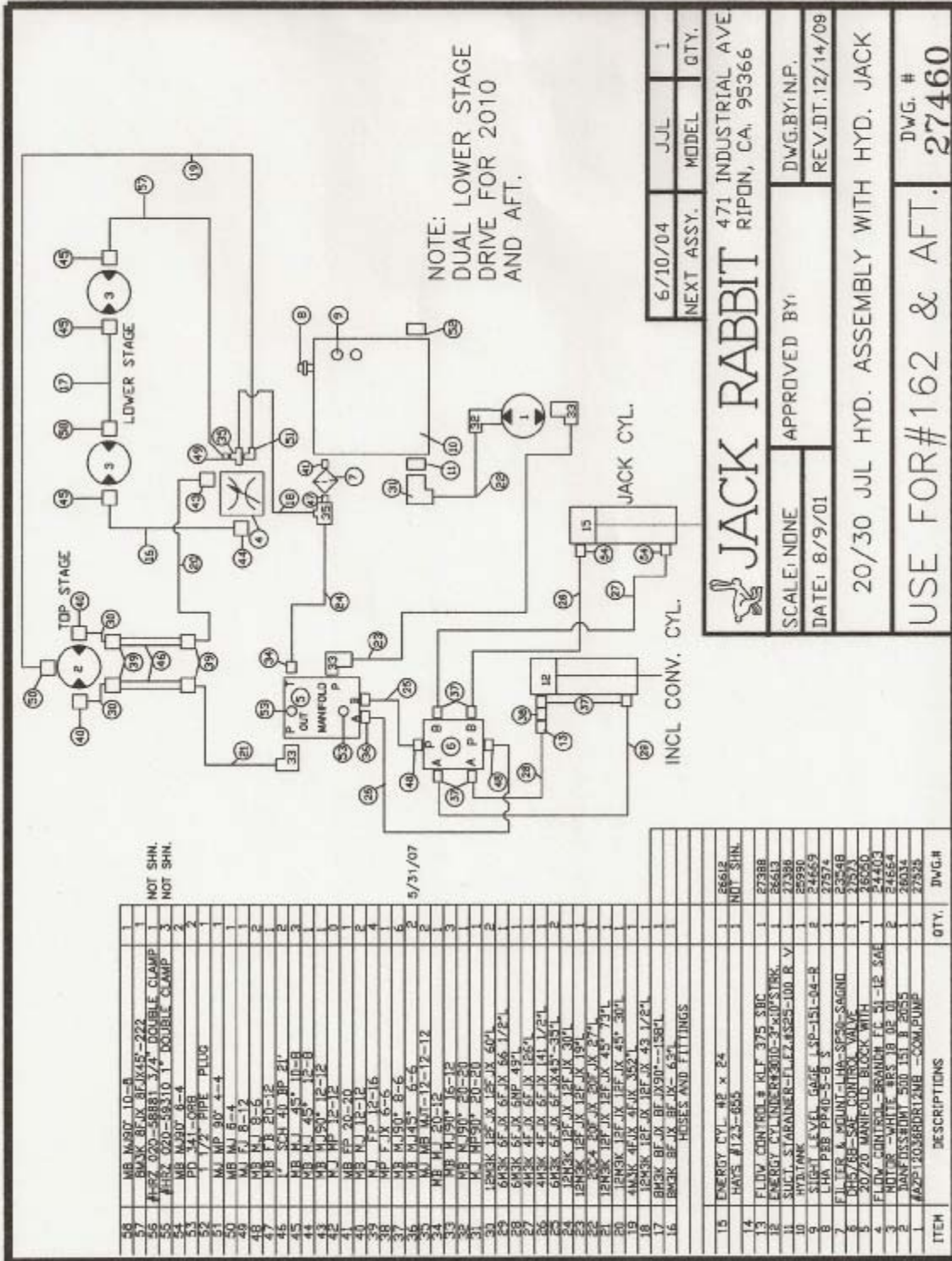


490 JLL 20/20 ELEVATOR

ITEM # PART # DESCRIPTION

SERIAL # REQD

HYDRAULICS:



NOT SHN.  
NOT SHN.

5/31/07

ITEM	DESCRIPTIONS	QTY.	DWG. #
15	ENERGY CYL 42 x 24	1	26612
16	HAYS #123-655	1	NOT SHN.
17	FLOW CONTROL RLF 375 3/8C	1	27388
18	ENERGY CYLINDER 4000-3-400 2 1/2	1	26613
19	SUCT. STRAINER-FLEX 4.525-100 R V	1	21388
20	HYDRAULIC VALVE 645E 1 1/2-151-04-R	2	27229
21	CHK. P/B 40-5-6	2	27574
22	FL. T/P 1 MOUNT-LHA-SPEC-SAGRD	1	27248
23	400 785 SAE CONTROL VALVE	1	27574
24	20/20 MANIFOLD BLOCK WITH	1	26520
25	FLOW CONTROL BRANCH FC 51-12 3/4E	1	24403
26	HOT/OIL-WHITE RES 1/8 O.D.	2	24654
27	DANF-DSSBDM 500 151 B 2055	1	26034
28	#AZP-2038DR12AMB-COM.PUMP	1	27525

6/10/04	JLL	1
NEXT ASSY.	MODEL	QTY.

**JACK RABBIT** 471 INDUSTRIAL AVE  
RIPON, CA, 95366

SCALE: NONE APPROVED BY: DWG. BY: N.P.

DATE: 8/9/01 REV. DT: 12/14/08

20/30 JLL HYD. ASSEMBLY WITH HYD. JACK

USE FOR #162 & AFT. DWG. # 27460

**490 JYL 20/20 ELEVATOR**

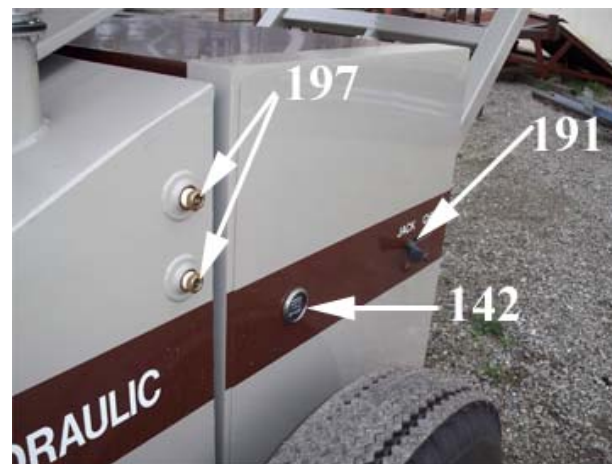
<b>ITEM #</b>	<b>PART #</b>	<b>DESCRIPTION</b>	<b>SERIAL #</b>	<b>REQD</b>
<b>HYDRAULICS:</b>				
1	26034	Incline Conveyor Motor (OMT500)	#66-115,120,130----	1
	26034	Incline Conveyor Motor (DT 3306 328D)	#116-119&121	1
	24409	Incline Conveyor Motor (RE320804)	#1-65	1
35	24664	Lower Hyd. Motor (#RS180201)	#162---	2
	24664	(#RS180106)	#1-99	1
	24664A	Seal Kit Motor (#RS180201)	#100---	1
180	23548A	Filter Element (LHA SP50-10)		1
181	23548	Filter (LHA SP50-NAGNO) Assemble		1
182	24671	Suction Flow Strainer (#S25-100-RV3)		1
183	27386	EZ Flow Strainer (#S 15 100-RV3)		1
184	22283	Breather (LHA PBB 40-5-8S)		1
185	27574	Pump (#P315 193FW AB20 65 RO ABO5-010		1
	27525	Pump (#AZPN 1220036RDR---		1
186	26613	Cylinder (3" Dia x 10" Stroke)		1
	27775	Seal Kit for 3" Bore (Energy)		1
186	24641	Lower Pin – Cylinder		1
187	26612	Cylinder (2"Dia. x 24") Jack #7739		1
188	26050	Duel Flow Manifold Block Assembly		1
	25130	Waterman Valve, (15C7TS)		1
190	27524	Jack or Incline Conveyor Selector Valve		1
191	27573	Jack or Incline Conveyor Selector Valve (DH5/6B-SAE)		1
192	25335	Flow Divider (BGR 51-3/4)		1
193	24403	Flow Control (FC 51-3/4)		1
194	27388	Flow Control Valve (KLF 375, 5BC)		1
195	27182	Hydraulic Tank Filler Cap		1
196	26199	Clamp (1" Hycon Double Clamp)		3
197	24669	Sight, Level Gauge (LSP-151)		1
	26090	Hydraulic Schematic 20/20		1

490 JYL 20/20 ELEVATOR

ITEM #      PART #      DESCRIPTION

SERIAL #      REQD

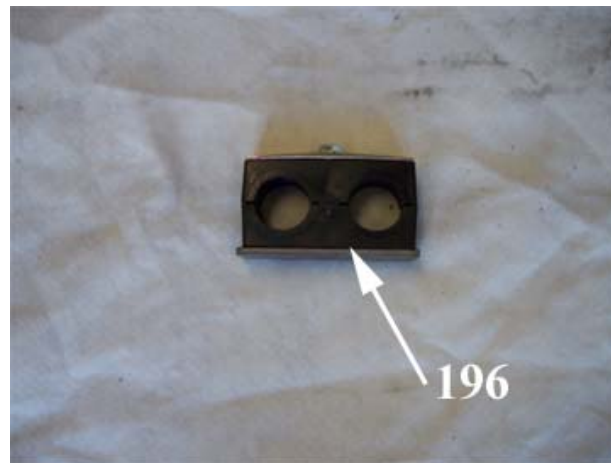
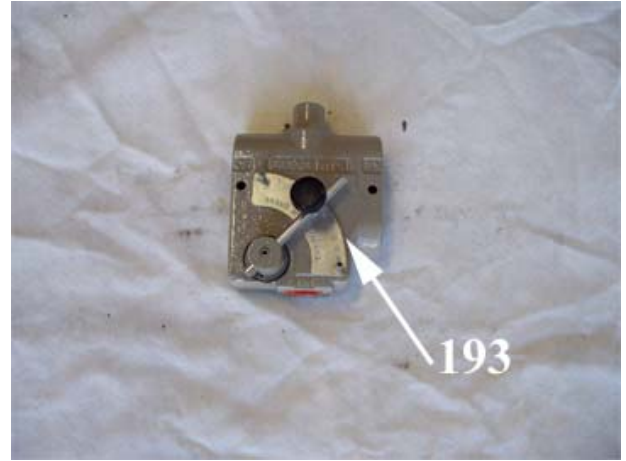
HYDRAULICS:



**490 JJL 20/20 ELEVATOR**

<b>ITEM #</b>	<b>PART #</b>	<b>DESCRIPTION</b>	<b>SERIAL #</b>	<b>REQD</b>
---------------	---------------	--------------------	-----------------	-------------

**HYDRAULICS:**



**BEARINGS:**

<b>5</b>	<b>22097</b>	<b>Bearing (1-1/2" Pillow Block)</b>	<b>2</b>
<b>8</b>	<b>23524</b>	<b>Flangette Bearing (#52 MST 22PPRAG)</b>	<b>2</b>
<b>10</b>	<b>27306</b>	<b>Bearings For Return Rollers</b>	<b>16</b>
<b>16</b>	<b>22977</b>	<b>Bearing (1" Pillow Block)</b>	<b>6</b>
<b>26</b>	<b>31067</b>	<b>Bearing (FC350 1-1/2")</b>	<b>2</b>
<b>30</b>	<b>26464</b>	<b>Bearings Pad</b>	<b>8</b>

**JJL 20/20 ELEVATOR**

<b>ITEM #</b>	<b>PART #</b>	<b>DESCRIPTION</b>	<b>SERIAL #</b>	<b>REQD</b>
<b>BELTS</b>				
<b>9</b>	<b>27376</b>	<b>(20" x 64' 4") Giant Z Incline Belt</b>	<b>1-129 &amp; 207---</b>	<b>1</b>
	<b>27756</b>	<b>(20" x 64' 6") Giant Z Incline Belt</b>	<b>130-206</b>	<b>1</b>
	<b>24410</b>	<b>(20" x 64' 4")Crescent Top Incline Belt</b>	<b>1-129 &amp; 207---</b>	<b>1</b>
	<b>27523</b>	<b>20" Pin For Lacing</b>		<b>1</b>
<b>33</b>	<b>27377</b>	<b>(20" x 317") Giant Z Bin Belt</b>	<b>115---</b>	<b>1</b>
	<b>27115</b>	<b>(20"x 317") Crescent Top Bin Belt</b>	<b>115---</b>	<b>1</b>
	<b>27530</b>	<b>(20" x 294") Giant Z Bin Belt</b>	<b>1-114</b>	<b>1</b>
	<b>24411</b>	<b>(20" x 293") Crescent Top Bin Belt</b>	<b>1-114</b>	<b>1</b>

Cleated belts, snub and idler rollers for cleated belts are obsolete, but can be special ordered.

**DECALS:**

<b>300</b>	<b>24537</b>	<b>JACLRABBIT (White)</b>		<b>1</b>
	<b>24538</b>	<b>JACKRABBIT (Brown)</b>		<b>2</b>
	<b>24546</b>	<b>DIESEL (White)</b>		<b>1</b>
	<b>24546A</b>	<b>DIESEL (Brown)</b>		<b>1</b>
	<b>24548</b>	<b>HYDRAULIC (White)</b>		<b>1</b>
	<b>24548A</b>	<b>HYDRAULIC (Brown)</b>		<b>1</b>
	<b>24986</b>	<b>CONTROL PANEL</b>		<b>1</b>
	<b>24637</b>	<b>OIL, IGN, ALT, ON, OFF (1 Set)</b>		<b>1</b>
	<b>27529</b>	<b>Switch Name Plate Insert</b>		<b>1</b>

**MISCELLANEOUS PARTS:**

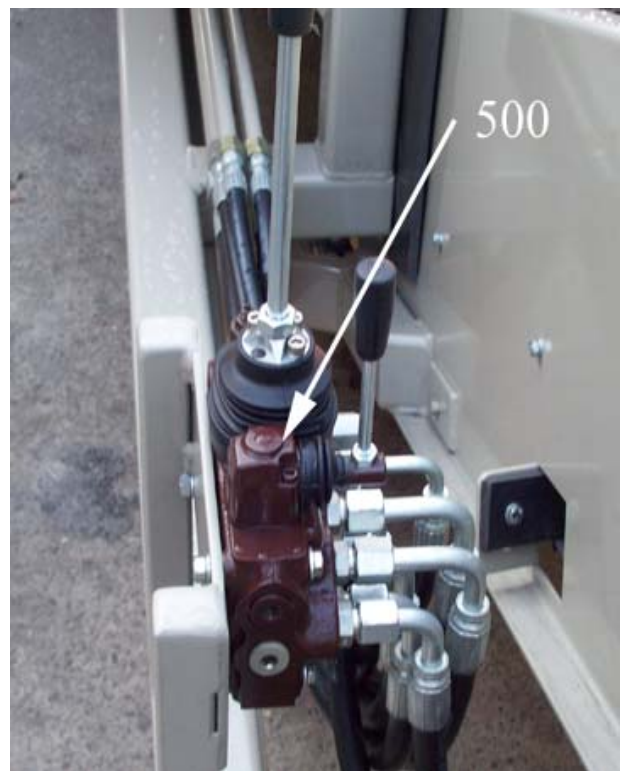
<b>350</b>	<b>23944</b>	<b>Tires 7.5 X 16 LTE</b>		<b>2</b>
	<b>23920</b>	<b>Rims 16 X 6.0</b>		<b>2</b>
	<b>24655</b>	<b>Jack Stand, Top Drive OBS.</b>		<b>1</b>
	<b>24751</b>	<b>Fuel Cap #703-1060</b>		<b>1</b>
	<b>27285</b>	<b>Gas Shock</b>		<b>1</b>

**Paint and Primer**

<b>25750</b>	<b>Beige Touch Up</b>	<b>1</b>
<b>25750A</b>	<b>Brown Touch Up</b>	<b>1</b>
<b>27552</b>	<b>Primer, mixed</b>	<b>1</b>
<b>27552-1</b>	<b>Primer, 1 gal.</b>	<b>1</b>
<b>27552-2</b>	<b>Activator 1 gal.</b>	<b>1</b>
<b>27552-A</b>	<b>Beige, mixed 1 gal.</b>	<b>1</b>
<b>27552-AA</b>	<b>Beige, not mixed 3/4 gal.</b>	<b>1</b>
<b>27552-B</b>	<b>Brown, mixed 1 gal.</b>	<b>1</b>
<b>27552-BB</b>	<b>Brown, not mixed 3/4 gal</b>	<b>1</b>
<b>27552-C</b>	<b>Urethane Hardener 1 pt.</b>	<b>1</b>
<b>27552D</b>	<b>Enhancer, 1pt</b>	<b>1</b>

**FRONT WHEEL DRIVE OPTION FOR 490 JYL ELEVATOR**

<b>ITEM #</b>	<b>PART #</b>	<b>DESCRIPTION</b>	<b>SERIAL #</b>	<b>REQD</b>
500	28510	Valves		1



**ITEM #      PART #      DESCRIPTION      SERIAL #      REQD**

**FRONT WHEEL, ASSEMBLIES**

**501      28240      Front Spindle Plate Assembly**

**1**

PAGE 02

JACKRABBIT

#28239 HELAC ROTARY CYL.

10	26481	GR.SAVER TIRE	1
9	26482A	DRIVEN RIM	1
8	26915	CENTER PLATE	1
7	26512A	DR. WHL. MOTOR	1
6	27483A	FAIRFIELD HUB	1
5	26483	HUB PL.MTR.MT	1
4	26513	SPACER TUBE	1
3	26799	INNER GUSSET	2
2	28226	FRONT GUSSET	2
1	28229	FR.SPINDLE PLATE	1
ITEM	DWG.#	DESCRIPTIONS	QTY.

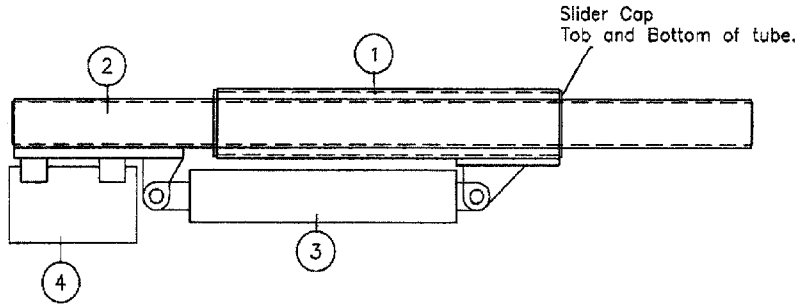
28421	YD09	1
26560A	YJUL'08	1
NEXT ASSY.	MODEL	QTY.

18/24/2008 14:06

<b>JACKRABBIT</b>		471 INDUSTRIAL AVE. RIPON, CA. 95366
SCALE: NONE	APPROVED BY:	DWG.BY: N.P.
DATE: 4/8/08	TOLERANCE: ±1/16 DEG:±1/2°	REV.DT. 10/16/08
FRONT SPINDLE PL. ASS'Y		
		DWG. # <b>28240</b>



ITEM #	PART #	DESCRIPTION	SERIAL#	REQD.
<b>FRONT WHEEL, ASSEMBLIES</b>				
502	28238	Steering Cylinder Assembly		1



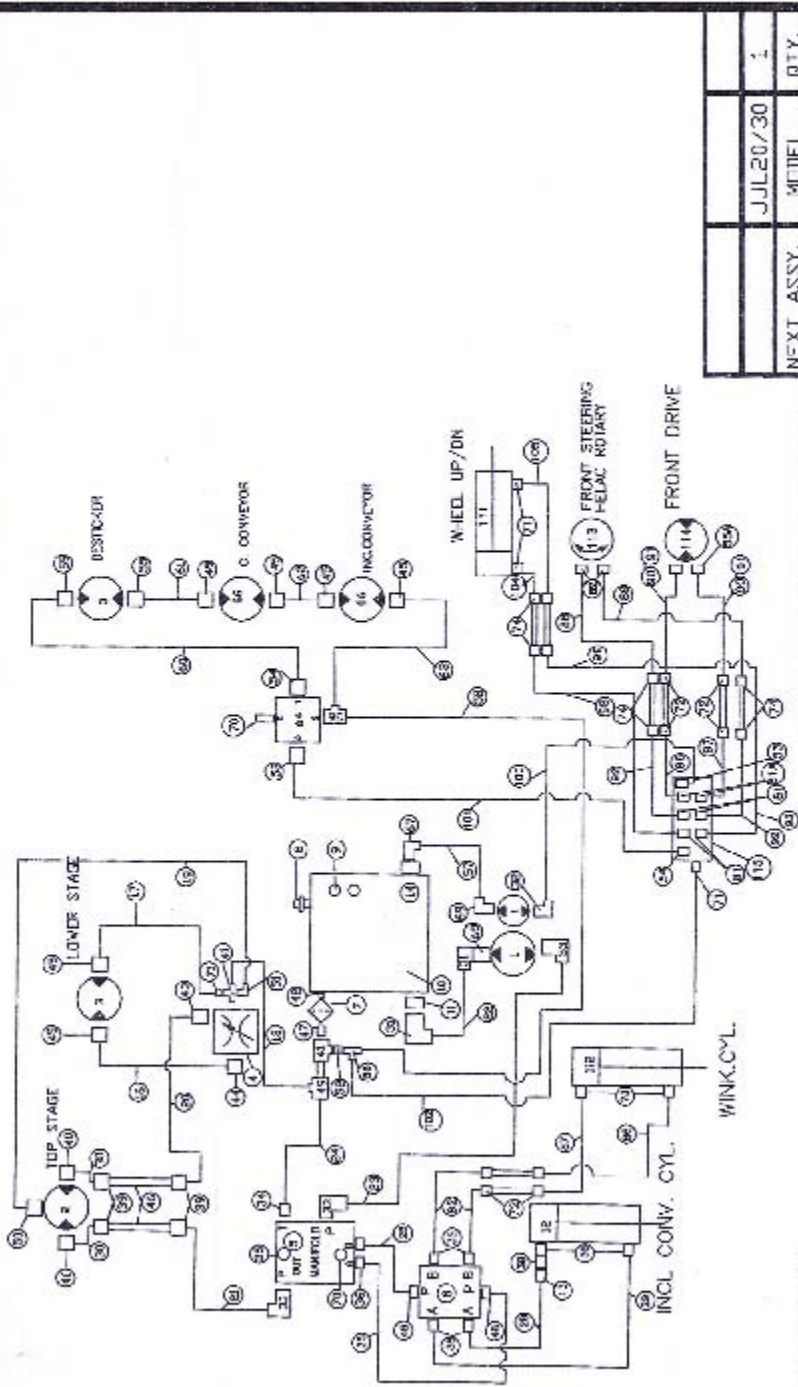
STR.WHL	YD09	1
STR.WHL	YJL'08	1
NEXT ASSY.	MODEL	QTY.

**JACKRABBIT** 471 INDUSTRIAL AVE.  
RIPON, CA. 95366

SCALE: NONE	APPROVED BY:	DWG.BY: N.P.
DATE: 5/1/08	TOLERANCE: ±1/16 DEG: ±1/2°	REV.DT. 10/10/08
<b>STTERING CYL. ASS'Y</b>		
		DWG. # <b>28238</b>

ITEM	DWG.#	DESCRIPTIONS	QTY.
4	28239	HELAC ROTARY CYL.	1
3	28354	CYL.#3014-14"STORKE	1
2	28237	INNER SLIDE WLD'T	1
1	28236	SLIDER TUBE WLD'T	1

502A	28317	UHMW Internal Spacer for slide tube (1/2" x 3 7/8" x 25 7/8")	4
503	27354	Cylinder CTRE 2008	1



2400RPM--24.2 GPM  
2400RPM--5.6 GPM

USE FOR #415 AND 416--2008

NEXT ASSY.	JUL20/30	QTY.	1
<b>JACK RABBIT</b> 471 INDUSTRIAL AVE RICHMOND, CA 95366			
SCALE: NONE	APPROVED BY:	D.W.G. BY: N.P.	
DATE: 12/10/08	TOLERANCE: 1/16	REV. DT.	
JUL20/30 WITH WOOD CHUCK AND FRONT DRIVE WHEEL			
AUSIE			D.W.G. # <b>26920C</b>