



471 INDUSTRIAL AVE.  
RIPON, CALIF. 95366  
PHONE (209) 599-6118

# JACKRABBIT SERVICE PARTS

## WEDGE 10 RESERVOIR CART



## **TO OUR CUSTOMERS:**

Thank you for choosing JackRabbit. We stand behind our products and are very proud of the equipment we design and manufacture. Preventive maintenance is the easiest and least expensive type of maintenance. Please take the time to review this Owner's Operator's Manual it can save you time and expense.

### **WARRANTY**

JACKRABBIT warrants each new piece of equipment and parts manufactured by it to be free from defects in material and workmanship under normal use and service. The obligation of JACKRABBIT shall be limited to replacing any part which shall, within 1 year (1 season) after delivery to the original purchaser, be returned to JACKRABBIT with transportation charges prepaid and which an examination by JACKRABBIT discloses defective. This Warranty does not obligate JACKRABBIT to bear the cost of labor, travel time or hauling in connection with the replacement or repair of the defective parts and in no event will be liable for consequential damages including but not limited to loss of crop, rental or substitute equipment or other commercial loss.

No warranties or representations made by persons other than representatives of JACKRABBIT expressly authorized in writing to do so shall be valid and binding upon JACKRABBIT. No dealer shall be authorized to bind JACKRABBIT in this respect.

JACKRABBIT makes no warranty with respect to component parts not manufactured by JACKRABBIT. This warranty shall not apply to any equipment which has been altered in any way outside of manufacturers factory, or which has been subject to misuse, neglect or accident.

**This warranty is expressly in lieu of all other warranties and representations, expressed, implied, or statutory, including warranties of merchantability and fitness for a particular use, and all other liabilities or obligations on the part of JACKRABBIT, foreseeable or not.**

### **USER'S RESPONSIBILITY**

It is the responsibility of the user to read the Operator's Manual and understand the safe and correct operating procedures as pertains to the operation of the product and to lubricate and maintain the product according to the maintenance schedule in the Operator's Manual.

### **WARRANTY SERVICE**

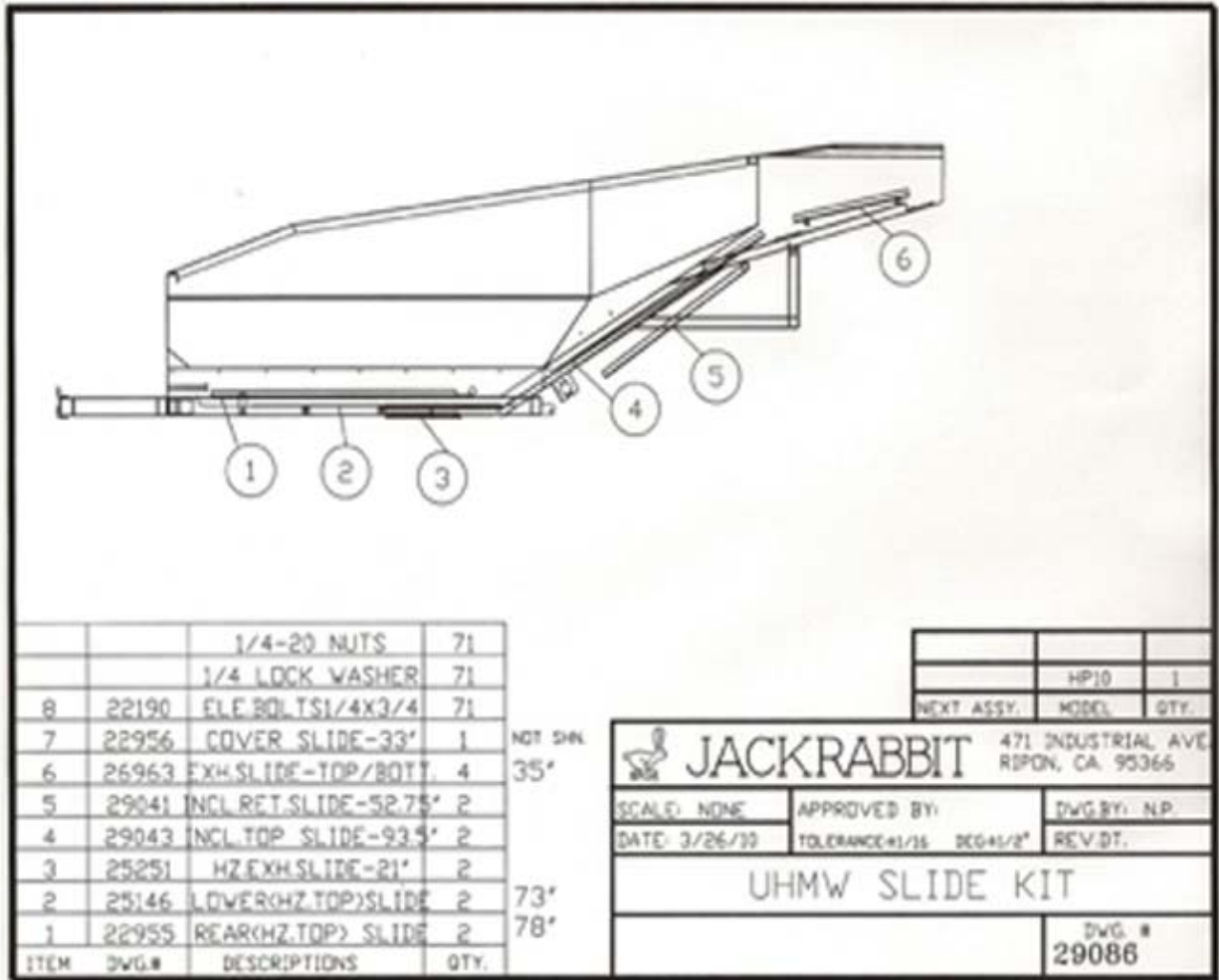
Warranty service may be obtained through an authorized dealer or JackRabbit service facility. Write or call: JackRabbit, 471 Industrial Ave, CA 95366, telephone (209) 599-6118

## TABLE OF CONTENTS

<b>A. Slides</b>	<b>1</b>
<b>B. Seals</b>	<b>2 - 4</b>
<b>C. Chains</b>	<b>5</b>
<b>D. Sprockets, Shafts, Bearings &amp; Torque Arms</b>	<b>6 - 7</b>
<b>E. Miscellaneous &amp; Decals</b>	<b>8 - 9</b>
<b>F. Hydraulics</b>	<b>10 - 11</b>
<b>G. Draper Top</b>	<b>12 - 14</b>
<b>H. Desticker</b>	<b>15 - 18</b>
<b>I. Hydraulic Systems Diagrams &amp; Options</b>	<b>19 - 24</b>

**RESERVOIR CART**

ITEM#	PART#	DESCRIPTION	SERIAL#	REQD
SLIDES:			750---	
	29086	Slide Kit (items 1-10)		1



ITEM #	PART#	DESCRIPTION	SERIAL#	REQD
			750---	
1	22955	Rear Horizontal Top Slide, 78"		2
2	25146	Lower Horizontal Top Slide, 73"		2
3	25251	Horizontal Exhaust Slide 21"		2
4	29043	Incline Top Slide - 93.5"		2
5	29041	Incline Return Slide -52.75"		2
6	26963	Exhaust slide Top & Bottom 35"		4
7	22956	Cover Slide 33" (not shown)		1
8	22190	1/4" x 3/4" Elevator Bolts		71
9		1/4" Lock Washers		71
10		1/4" Hex Nuts		71

**RESERVOIR CART**

ITEM	PART#	DESCRIPTION	SERIAL#	REQD
<b>SEALS:</b>			<b>750---</b>	
	<b>29085</b>	<b>Seal Kit (items 30 – 34)</b>		<b>1</b>

The drawing shows a side view of a reservoir cart with various seals indicated by circled numbers: 30 (front seal), 31 (horizontal bin seals), 32 (incline seals), 33 (exhaust seals), and 34 (transition seal).

	HP10	1
NEXT ASSY.	MODEL	QTY.

<b>JACKRABBIT</b>		471 INDUSTRIAL AVE. RIPON, CA. 95366	
SCALE: NONE	APPROVED BY:	DWG. BY: N.P.	
DATE: 3/26/10	TOLERANCE: ±1/16	DEG: ±1/2°	REV. DT.
<b>RUBBER SEAL KIT</b>			
			DWG. # <b>29085</b>

<b>34</b>	29048	TRANSITION SEAL	2
<b>33</b>	27047/47A	EXH SEAL -RH/LH	1EA
<b>32</b>	29044/45	INC. SEAL -RH/LH	1EA
<b>31</b>	29051/52	BIN SEAL -RH/LH	1EA
<b>30</b>	27044	FRONT SEAL	1
ITEM	DWG.#	DESCRIPTIONS	QTY.

ITEM#	PART#	DESCRIPTION	SERIAL#	REQD
			<b>750---</b>	
<b>30</b>	<b>27044</b>	<b>Front Seal</b>		<b>1</b>
<b>31</b>	<b>29051</b>	<b>Horizontal Bin Seal Rt.</b>		<b>1</b>
<b>31</b>	<b>29052</b>	<b>Horizontal Bin Seal Lt.</b>		<b>1</b>
<b>32</b>	<b>29044</b>	<b>Incline Seal Rt.</b>		<b>1</b>
<b>32</b>	<b>29045</b>	<b>Incline Seal Lt.</b>		<b>1</b>
<b>33</b>	<b>27047</b>	<b>Exhaust Seal Rt.</b>		<b>1</b>
<b>33</b>	<b>27047A</b>	<b>Exhaust Seal Lt.</b>		<b>1</b>
<b>34</b>	<b>29048</b>	<b>Lower Transition Seal (rubber only)</b>		<b>2</b>
<b>34A</b>	<b>29058</b>	<b>Lower Transition Seal Assembly Lt. (mesh chain)</b>		<b>1</b>
<b>34B</b>	<b>29059</b>	<b>Lower Transition Seal Assembly Rt. (mesh chain)</b> <b>(2 metal sides &amp; rubber) Rt. &amp; Lt.</b>		<b>1</b>

**RESERVOIR CART**

<b>ITEM#</b>	<b>PART#</b>	<b>DESCRIPTION</b>	<b>SERIAL#</b>	<b>REQD</b>
--------------	--------------	--------------------	----------------	-------------

**SEALS CONTINUED:**

<b>34C</b>	<b>29054</b>	<b>Outside Tran. Seal Plate Lt. (mesh chain)</b>		<b>1</b>
------------	--------------	--	--	----------

<b>34D</b>	<b>29055</b>	<b>Inside Tran. Seal Plate Rt. or Lt. (mesh chain)</b>		<b>1</b>
------------	--------------	--	--	----------

**Lower Transition Seal for Tube Chains**

<b>34</b>	<b>29048</b>	<b>Lower Transition Seal (rubber)</b>		<b>2</b>
-----------	--------------	---------------------------------------	--	----------

<b>34A</b>	<b>29079</b>	<b>Lower Transition Seal Assembly Lt. (tube chain)</b>		<b>1</b>
------------	--------------	--	--	----------

<b>34B</b>	<b>29079A</b>	<b>Lower Transition Seal Assembly Rt. (tube chain) (2 metal sides &amp; rubber) Rt. &amp; Lt.</b>		<b>1</b>
------------	---------------	---	--	----------

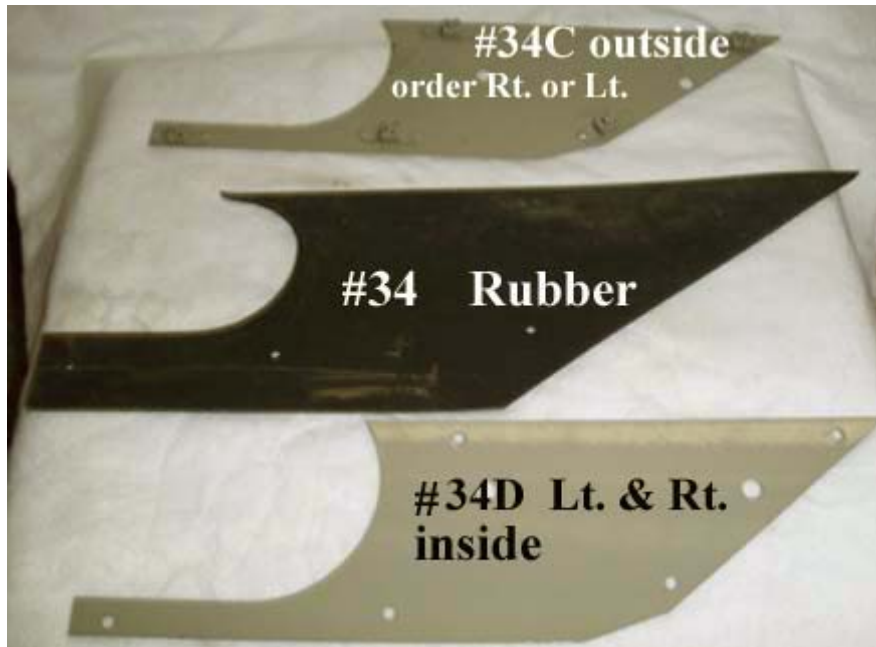
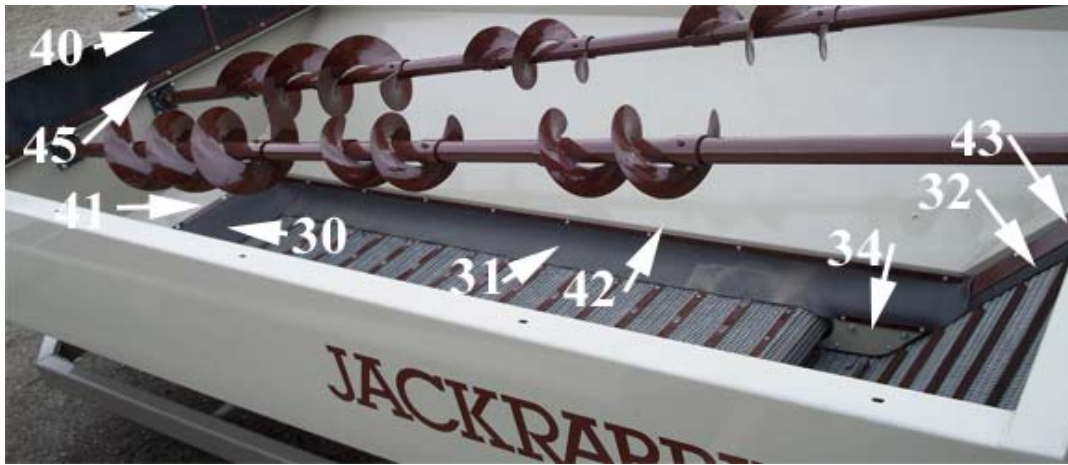
<b>34C</b>		<b>Outside Tran. Seal Plate Lt. (tube chain)</b>		<b>1</b>
------------	--	--	--	----------

		<b>Outside Tran. Seal Plate Rt. (tube chain)</b>		<b>1</b>
--	--	--	--	----------

<b>34D</b>		<b>Inside Tran. Seal Plate Rt. or Lt. (tube chain)</b>		<b>1</b>
------------	--	--	--	----------

**RESERVOIR CART**

<b>ITEM#</b>	<b>PART#</b>	<b>DESCRIPTION</b>	<b>SERIAL#</b>	<b>REQD</b>
39	29072	Front Bumper Notched,	750---	1
40	29072A	Front Bumper No Notched,		1
41	25266	Front Seal Hold Down (metal)		2
42	29053	Horizontal Seal Hold Down (metal)		2
43	29047	Incline Seal Hold Down (metal)		2
44	27048	Exhaust Seal Hold Down (metal) not shown		2
45	27051	Front Bumper Hold Down (metal)		1

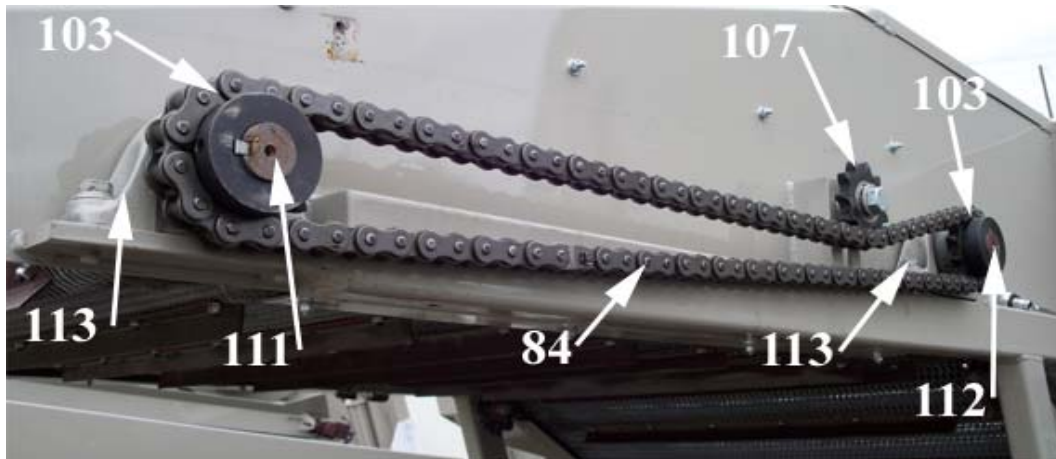


**RESERVOIR CART**

<b>ITEM#</b>	<b>PART#</b>	<b>DESCRIPTION</b>	<b>SERIAL#</b>	<b>REQD</b>
<b>CHAINS:</b>				
			<b>750---</b>	
<b>70</b>	<b>29035</b>	<b>Horz. Conv. Mesh Chain Assembly 188.5"</b>		<b>1</b>
	<b>29035A</b>	<b>Horz. Conv. Chain Assembly with belt for chipping</b>		<b>1</b>
<b>71</b>	<b>29036</b>	<b>Almond (incline) Mesh Chain Assembly 351"</b>		<b>1</b>
	<b>29036A</b>	<b>Almond (incline) Chain, with belt for chipping</b>		<b>1</b>
<b>72</b>	<b>29078</b>	<b>Walnut (incline) Tube Chain Assembly 351"</b>		<b>1</b>
<b>73</b>	<b>26224</b>	<b>Master Link Walnut</b>		<b>1</b>
<b>74</b>		<b>Pecan (incline) Tube Chain Assembly</b>		<b>1</b>
<b>75</b>	<b>27091</b>	<b>Master Link Pecan</b>		<b>1</b>
<b>76</b>	<b>25176</b>	<b>Flights Horizontal</b>		<b>1</b>
<b>77</b>	<b>25177</b>	<b>Flights Incline</b>		<b>1</b>
<b>79</b>	<b>25184</b>	<b>Woven Wire Mesh Belt (1 ft.)</b>		<b>1</b>
<b>Horizontal Chain</b>				
<b>80</b>	<b>25182</b>	<b>CA550 Roller Chain with A1 Attachment (1 ft.)</b>		<b>1</b>
<b>81</b>	<b>27144</b>	<b>Master Link (CA550) with A1 Attachment</b>		<b>4</b>
<b>82</b>	<b>27143</b>	<b>Master Link (CA550) without A1 Attachment</b>		<b>4</b>
<b>Incline Chain</b>				
<b>80A</b>	<b>25573</b>	<b>CA557 Roller Chain with A1 Attachment (1 ft.)</b>		<b>1</b>
<b>81A</b>	<b>27142</b>	<b>Master Link (CA557) with A1 Attachment</b>		<b>4</b>
<b>82A</b>	<b>27141</b>	<b>Master Link (CA557) without A1 Attachment</b>		<b>4</b>
<b>Drive Chain</b>				
<b>84</b>	<b>25103</b>	<b>#80 Roller Chain Per ft.</b>		<b>1</b>
<b>85</b>	<b>23802</b>	<b>#80 Roller Chain Master Link</b>		<b>2</b>
<b>86</b>	<b>23803</b>	<b>#80 Roller Chain Offset Link</b>		<b>2</b>

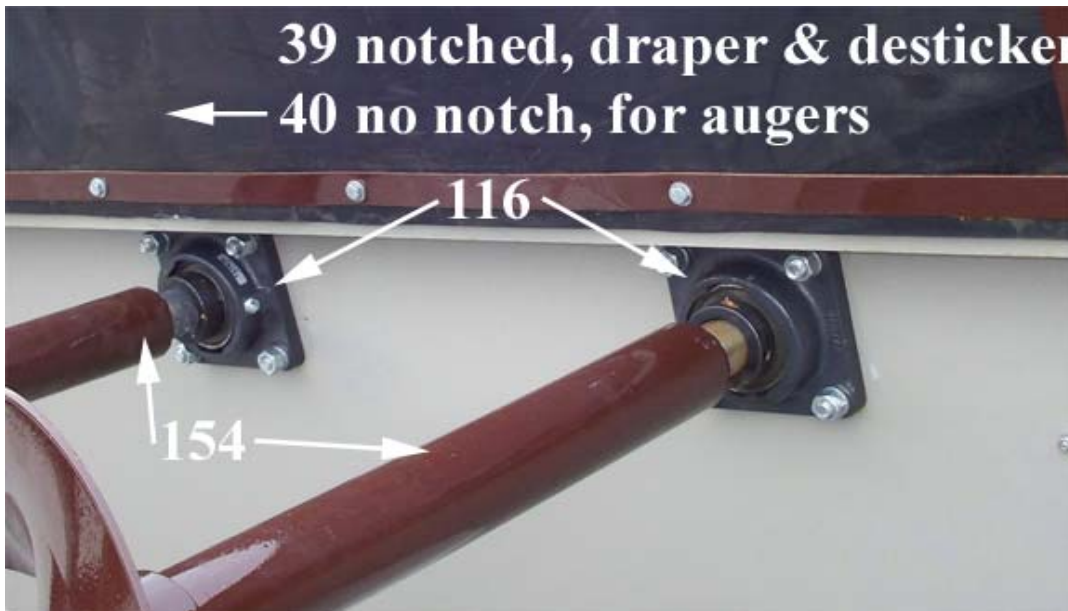
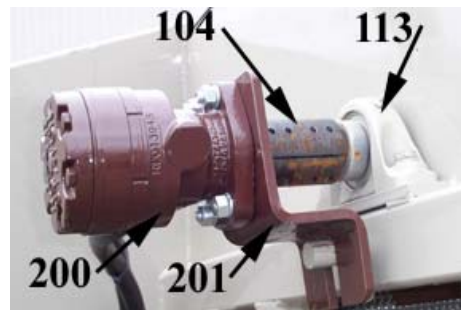
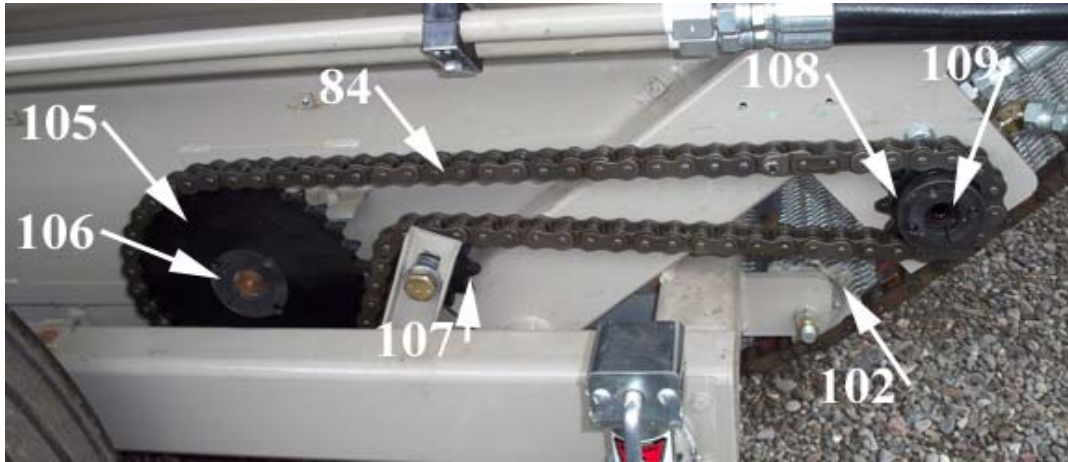
**RESERVOIR CART**

<b>ITEM#</b>	<b>PART#</b>	<b>DESCRIPTION</b>	<b>SERIAL#</b>	<b>REQD</b>
<b>SPROCKETS:</b>				750---
100	184	8T-550, 1 1/2" Bore (4 incline, 2 horz. Chain)		6
101	25131	8T-550, 1 1/4" Bore (2incline, 2 horz. Chain)		4
102	22983	8T-550, Idler Sprocket 5/8" Bore		8
103	25222	12T-80, Weldment Exhaust Drive Sprocket 1 1/2" Bore		2
104	22495	Climax Coupler 1 1/4" Bore		1
105	25227	32T-80 Weldment Sprocket		1
106	22712	2517- 1 1/2" Taper Lock Bushing		1
107	24678	11T-80 Idler Sprocket (#08011012)		1
108	25312	12T-80 Horz. Drive BTL Sprocket		1
109	24683	Taper Lock 615. 1 1/4" ID 5/16" Key		1
<b>SHAFTS:</b>				
110	25211	Front Idler, (1 1/4" Dia. x 48 1/2" Length)		2
111	25212	Drive (1 1/2" Dia. x 52 1/2" Length)		2
112	25213	Jack Shaft (1 1/2" Dia. x52 1/2" Length)		1
<b>BEARINGS:</b>				
113	22097	Pillow Block VCJ (1 1/2" Bore)		8
114	22977	Pillow Block VAK (1" Bore)		4
115	26464	Bearing Pad		4
116	22098	Auger Mount Bearing (VCJ 1 1/2" Bore)		2
<b>TORQUE ARM:</b>				
201	25391	Motor Mount (exhaust chain motor)		1



**RESERVOIR CART**

<u>ITEM#</u>	<u>PART#</u>	<u>DESCRIPTION</u>	<u>SERIAL#</u>	<u>REQD</u>
			750---	



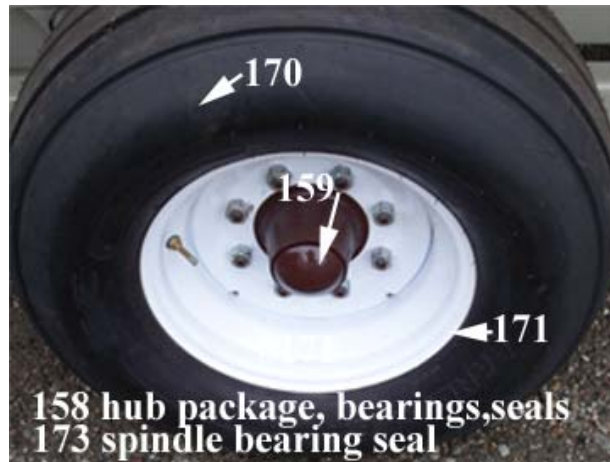
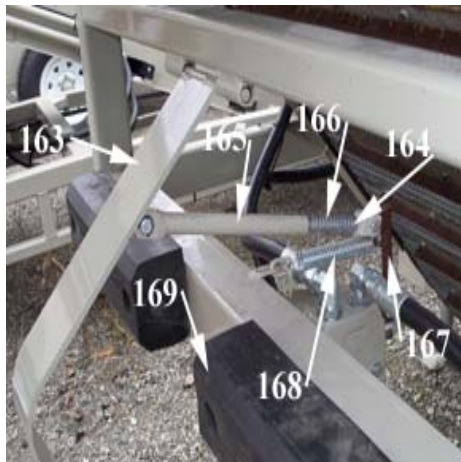
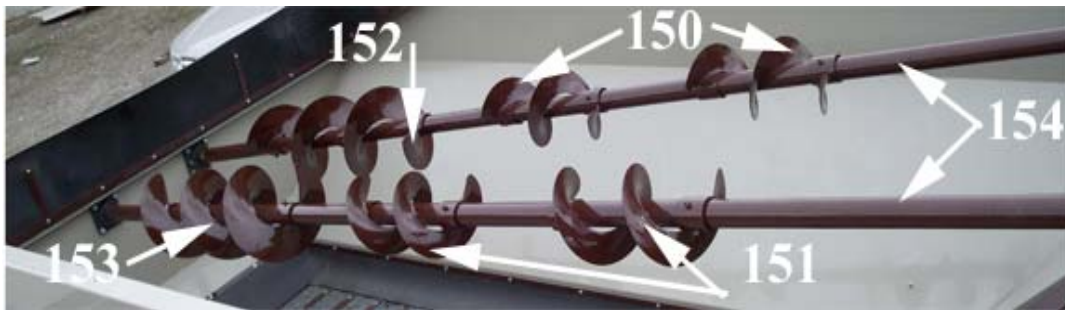
Bearing for the top end of auger are not shown. They are item #113, pillow block bearing With a 1 1/2" bore.

**RESERVOIR CART**

<b>ITEM#</b>	<b>PART#</b>	<b>DESCRIPTION</b>	<b>SERIAL#</b>	<b>REQD</b>
<b>MISCELLANEOUS PARTS:</b>			<b>750---</b>	
140	25271	Auger Assembly Right		1
141	25272	Auger Assembly Left		1
150	22611	Auger Flight Left 9"x 18"		2
151	22613	Auger flight Right 9"x 18"		2
152	24499	Auger Flight Left 12"x 36"		1
153	24501	Auger Flight Right 12"x 36"		1
154	25240	Auger Tube Weldment NW10		1
155	22989	Auger Motor latch Plate		2
158	22681	Hub Package (A 608) NW10		2
159	27393	Hub Cap		2
160	25890	Hitch Plate Weldment		1
161	23801	Jackstand (Side Mount, Jack Screw Type)		1
162	27365	Lug Nuts		8
163	26080	Runner Pedal Weldment		1
164	26076	Actuator Plunger Weldment		1
165	26078	Actuator Tube Weldment		1
166	27170	Compression Spring		1
167	26053	Valve Handle Weldment		1
168	27169	C-55 Extension Spring		1
169	27127	Dock Bumpers (ER -45)		2
170	27022	Tire 31 x 13.5-15		1
171	27021	Rim (Implement (W51350)		1
171A	27022A	Tire Mounted on Rim		1
172	22714	Spindle Plate Weldment (with spindle & hub)		1
173	27394	Spindle Bearing Seal		2

**RESERVOIR CART**

<b>ITEM#</b>	<b>PART#</b>	<b>DESCRIPTION</b>	<b>SERIAL#</b>	<b>REQD</b>
<b>DECALS:</b>			750---	
180	27532	“CAUTION”		2
181	283	“Grease” arrow		2
182	29081	JACKRABBIT(right side)		1
183	29082	JACKRABBIT (left side)		1
184	25750	Paint (touch up beige)		1
185	27552	Nason Primer Mixed		1
	27552A	Paint JackRabbit Beige, Gal.		1
	27552B	Paint JackRabbit Brown, Gal		1



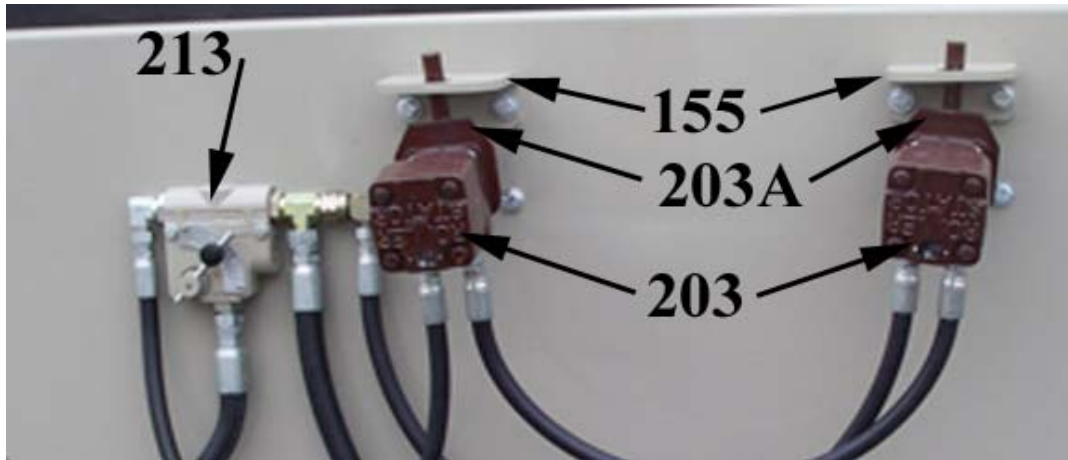
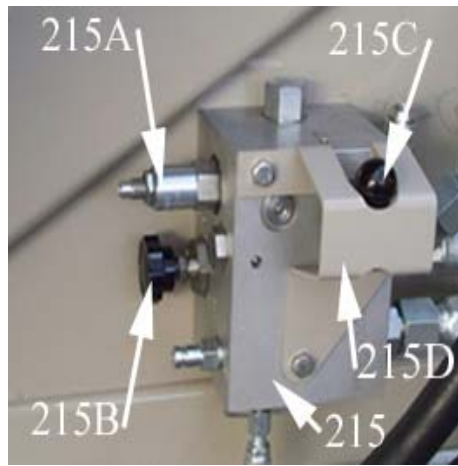
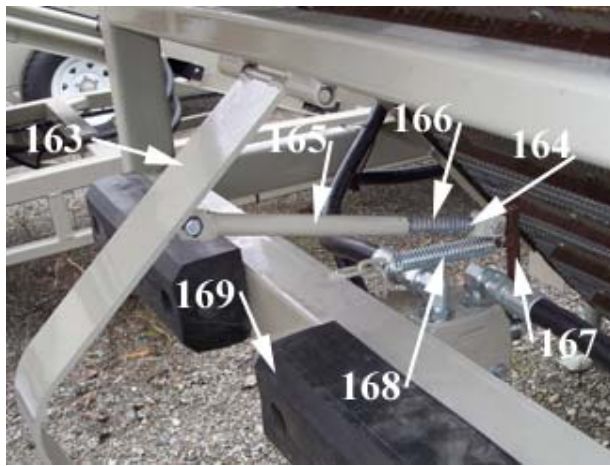
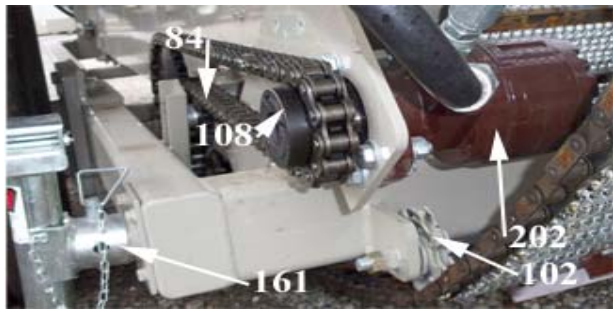
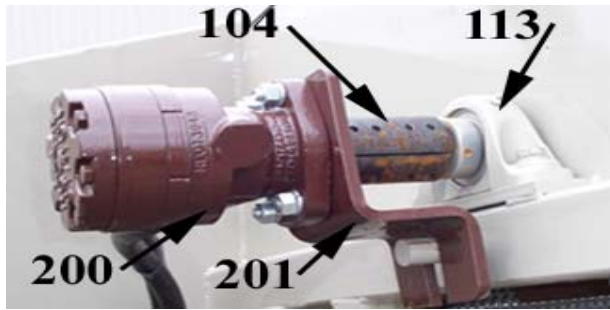
**RESERVOIR CART**

<b>ITEM</b>	<b>PART#</b>	<b>DESCRIPTION</b>	<b>SERIAL#</b>	<b>REQD</b>
<b>HYDRAULICS:</b>			<b>750---</b>	
200	26242	Motor (RE180804) (exhaust )		1
201	25391	Motor Mount (exhaust motor)		1
202	24409	Motor (RE 320804) (horizontal chain)		1
203	24664	Auger Motor (RS180201)		2
	24664A	Auger Motor Seal Kit for 24664		1
203A	24395A	Torque Arm (auger motor)		2
206	27557B	Energy Valve (B1239) SAE/32098C, "O" Ring		1
	27557	Energy Valve (B1239) pipe thread		1
167	26053	Handle weldment		1
208	25707	Check Valve (DC750)		1
209	26945	Wood Box Cylinder (2" x 4" stroke)		1
210	25278	¾" Hycon Double Clamp		3
211	25132	Flow Control (FCR-51-10 ¾" SAE "O" ring boss)		1
	25132	Flow Control (FCR-12 SAE & pipe thread)		1
212	25132A	FCR Relief Kit Includes: B5067 Ball, RL59A9 Spring, RL 57A Adjusting Screw, RL56 Nut, & B5984 Washer		1
213	24403	Flow Control 51-12 (no relief, for augers)		1
213A		Flow Divider B-50 (augers pecans)		1
215	27491	Manifold HP19506-2		1
215A	27317	Valve (in manifold) FRDA XAN 100gpm		1
215B		Flow Control Valve (manifold)		1
215C		Open Center & Closed Center Valve (manifold)		1
215D	27760	Open / Closed Center Locking Bracket (manifold)		1
240	28155	Hub, for wheel motor assist, used in Australia		2
(Kit)	27480	John Deere 6510L Kit, Tractor Portion (see page 19)		1
(Kit)	27960	John Deere 6520L Kit, Tractor Portion (see page 20)		1
(Kit)	28350	John Deere 6430 Kit, Tractor Portion (see page 21)		1
DWG	27050C-JD	Cart Diagram, for John Deere 6510L, 6520L, & 6430 Cart with Augers & Runner Valve (see page 22)		1
DWG	27050K-JD	Cart Diagram, for John Deere 6510L, 6520L, & 6430 Cart with Draper Top & Runner Valve (see page 23)		1

(Kit) 27480, 27960 & 28350 require the John Deere tractor to be equipped with power beyond hydraulic outlets. These kits cannot be used with remotes or open center hydraulic systems.

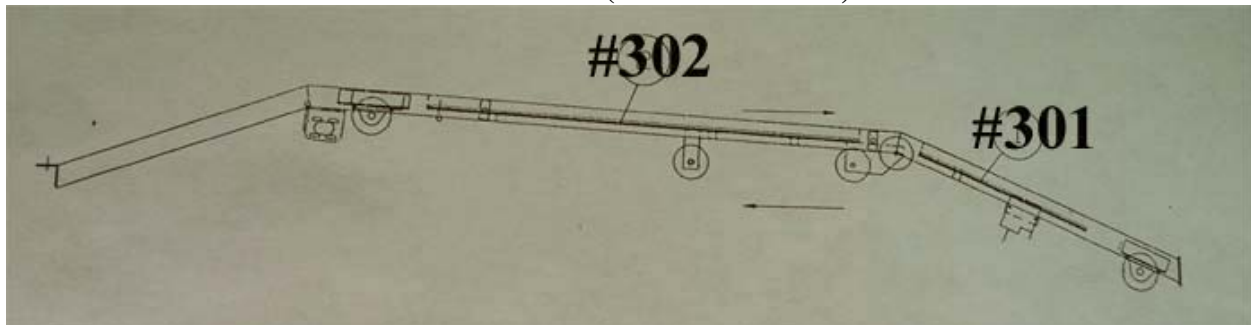
**RESERVOIR CART**

<b>ITEM#</b>	<b>PART#</b>	<b>DESCRIPTION</b>	<b>SERIAL#</b>	<b>REQD</b>
			750---	



**DRAPER TOP**

<b>ITEM#</b>	<b>PART#</b>	<b>DESCRIPTION</b>	<b>SERIAL#</b>	<b>REQD</b>
<b>SLIDES UHMW:</b>				<b>750---</b>
<b>300</b>		<b>RD10 Slide Kit (includes 301-303)</b>		<b>1</b>



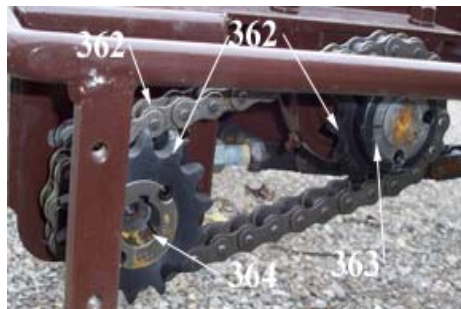
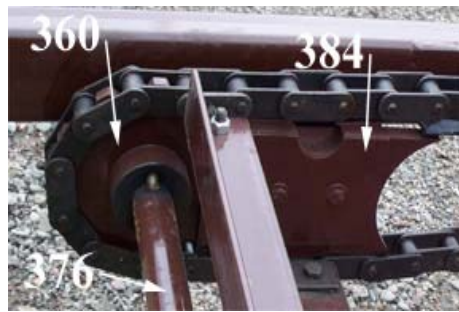
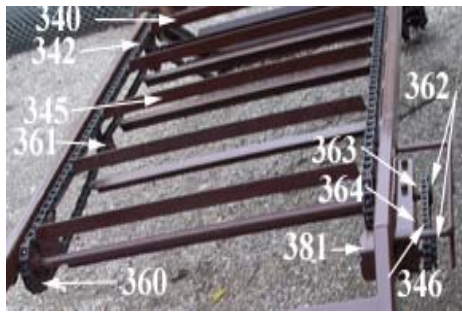
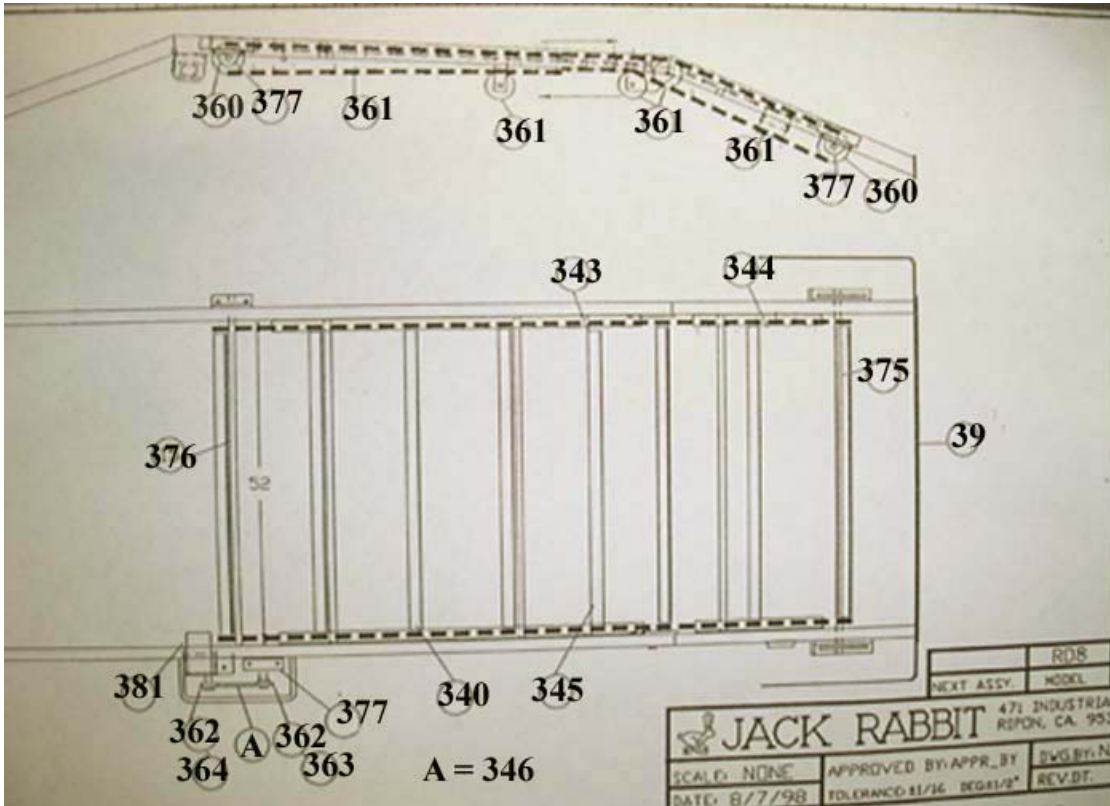
<b>301</b>	<b>27191</b>	<b>Short Slide</b>		<b>2</b>
<b>302</b>	<b>25747</b>	<b>Long Slide 8"</b>		<b>2</b>
<b>303</b>		<b>1/4"x 3/4" Elevator Bolts</b>		<b>16</b>
		<b>1/4" Lock Washers</b>		<b>16</b>
		<b>1/4" Hex Nuts</b>		<b>16</b>

**NW10 DRAPER TOP**

<b>ITEM#</b>	<b>PART#</b>	<b>DESCRIPTION</b>	<b>SERIAL#</b>	<b>REQ</b>
<b>CHAINS RD:</b>			<b>750---</b>	
340	29075	Chain Conveyor Assembly		1
341	29073	Chain (CA557/A4) 284.38 Plus ML		1
342	25573	Chain (CA557/A4 Tabs) per ft.		1
343	27142	Master Link (CA557 with A4 Attachment)		2
344	27141	Master Link ( CA557 No Attachment)		2
345	25572	Angle Flight 2"x 47 1/2"		17
346	27693	#60 Diamond Chain 25"		1
347	27594	60# Master Link		2
<b>SPROCKETS:</b>				
360	26585	11T 550 Sprocket (1 1/4" Bore)		4
361	22983	8T 550 Idler Sprocket (5/8" Bore)		8
362	27563	D60 (BTL Taper Lock Sprocket) 14		2
363	27565	Taper Lock Bushing (1210, 1 1/4")		1
364	27564	Taper Lock Bushing (1210, 1")		1
<b>SHAFTS:</b>				
375	25744	Front Idler Shaft (1 1/4" Dia.)		1
376	25743	Drive Shaft (1 1/4"Dia.)		1
<b>BEARINGS:</b>				
377	22096	Pillow Block (1 1/4")		4
<b>HYDRAULIC:</b>				
211 or 215B	25132	Flow Control with relief		1
	25132A	Relief Valve Kit for 25132		1
381	24664	Motor (RS180201)		1
<b>MISCELLANEOUS PARTS:</b>				
382	27360	Sprocket Guard Kit (metal & UHMW)		1
383	27216	Sprocket Guard		2
384	26231	Sprocket Shield (metal)		1
384	26231B	Sprocket Shield (UHMW)		2
385	26460	Chain Guard (rear drive)		1
386	26232	Outside Shield (metal)		2
387	27220	Plate, Sprocket Guard (MTG)		2
388	26445	Hydraulic Motor Mount		1
390	26460	Chain Guard		1
391	27290	Hydraulic Motor Mount		1

**DRAPER TOP**

**ITEM#      PART#      DESCRIPTION      SERIAL#      REQ**  
**750---**

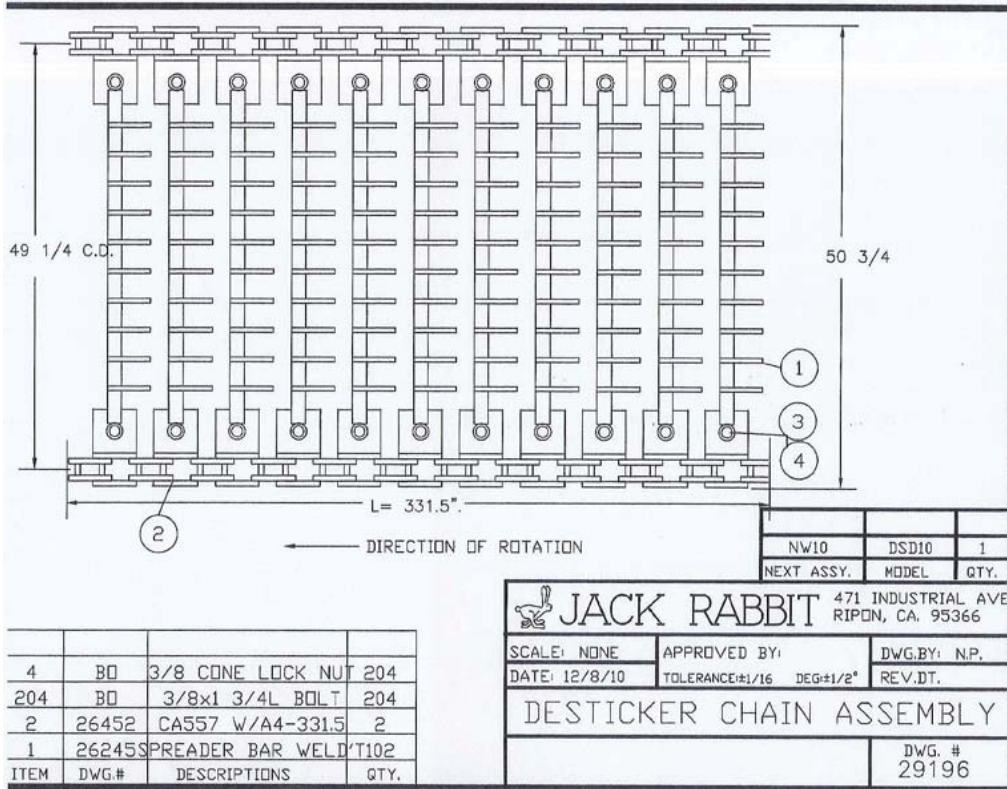


**DESTICKER DSD10**

**ITEM#      PART#      DESCRIPTION      SERIAL#      REQ**

**CHAINS:**

520	29196	Chain Assembly Complete 314"		1
520A	26452	Chain CA557 W/A/4 Attachment /Ft		1
521	26245	Spreader Bar (Weldment, 102)		1
522	27142	Master Link (CA 557) With A4 Attachment		1
523	27141	Master Link (CA 557) No Attachment		1
523A	27141A	Offset Link (CA 557) #E4008.		1
524	27693	#60 Diamond Chain 25"		1
525	27594	#60 Diamond Chain Master Link		1



**DESTICKER DSD10**

<b>ITEM#</b>	<b>PART#</b>	<b>DESCRIPTION</b>	<b>SERIAL#</b>	<b>REQ</b>
--------------	--------------	--------------------	----------------	------------

**SPROCKETS/BUSHINGS:**

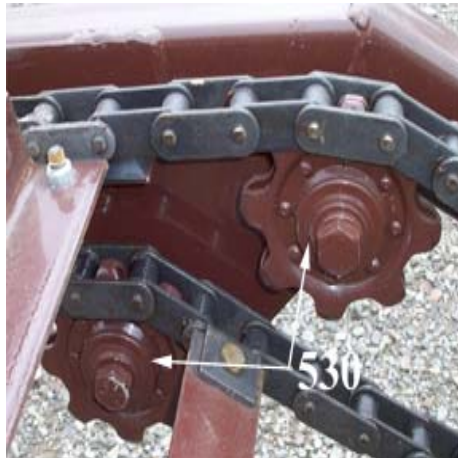
503	26585	11T 550 (1 1/4" Bore)		4
530	22983	8T 550 Idler (5/8" Bore)		8
531A	26201A	6T 550 Concentric Sprocket 5/8" Bore		4
533	27563	DGO BLT14 Sprocket		2
534	27565	Taper Lock Bushing 1210 1 1/4" Bore		1
535	27564	Taper Lock Bushing 1210 1" Bore		1

**SHAFTS:**

550	25744	Front Idler 1 1/4" x 61"		1
551	26467	Drive Shaft 1 1/4"x 65"		1

**BEARINGS:**

560	22096	Pillow Block (VAK 1 1/4")		4
562	26464	Bearing Pad		2
563	22977	Pillow Block, Cross Conveyor (VAK 1")		4



**PULLEYS, COUPLERS & TORQUE ARM:**

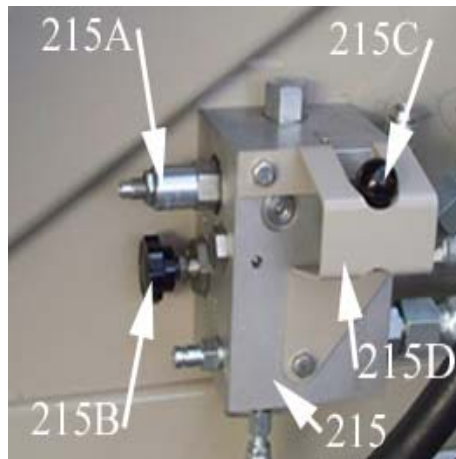
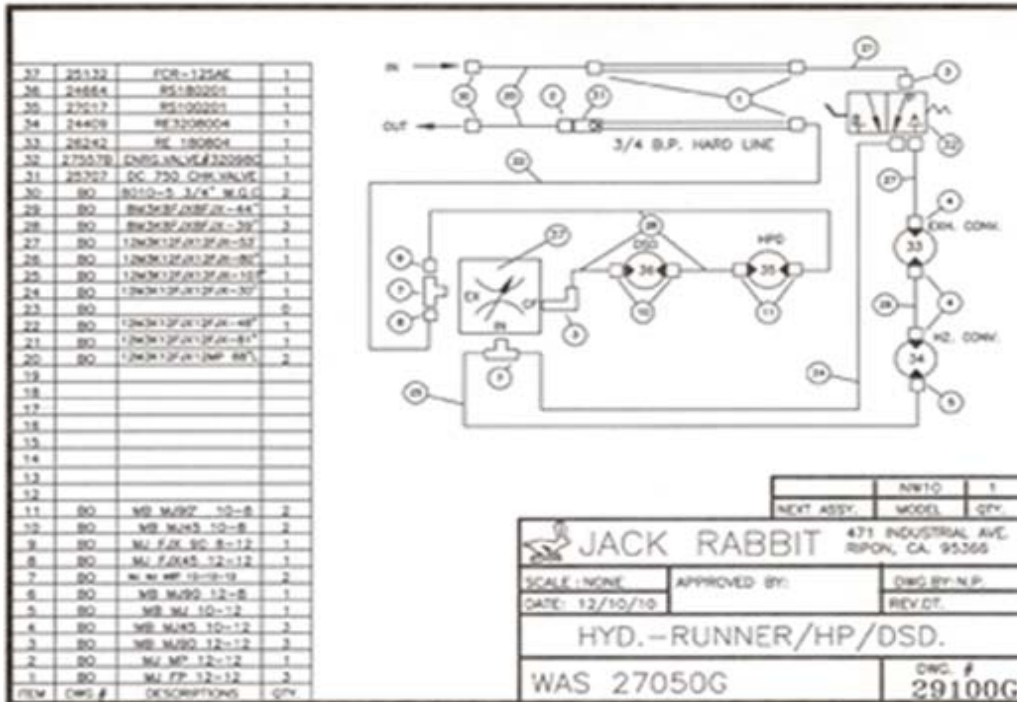
565	26158	Drive Pulley 2" x 12"		1
566	26157	Idler Pulley 2" x 12"		1
567	26493	Climax Coupler 1"		1
568	24395B	Torque Arm		1

**DESTICKER DSD10**

ITEM#	PART#	DESCRIPTION	SERIAL#	REQ
-------	-------	-------------	---------	-----

**HYDRAULICS: DWG 29100G**

570	24664	Motor (RS180201) Desticker		1
571	29156	Motor Mount Plate		1
580	25132	Flow Control, Cross Conveyor or DWG 27050E		1
	25132A	Relief Valve for 25132		1
590	27017	Motor (RS100201) Cross Conveyor		1



**DESTICKER DSD10**

<b>ITEM#</b>	<b>PART#</b>	<b>DESCRIPTION</b>	<b>SERIAL#</b>	<b>REQ</b>
<b>WOODBBOX:</b>				
		<b>Contact JackRabbit for other woodbox parts.</b>		
<b>591</b>	<b>26945</b>	<b>Hydraulic Cylinder 2" x 4"</b>		<b>1</b>
<b>592</b>		<b>Seal Kit for 2" x 4" Cylinder</b>		<b>1</b>
<b>SEALS/SLIDES:</b>				
<b>500</b>	<b>27098/99</b>	<b>Chain Seal (RH &amp; LF)</b>		<b>1</b>
<b>39</b>	<b>27049</b>	<b>Bumper (12" x 140" with Notch</b>		<b>1</b>
<b>502</b>	<b>29155</b>	<b>Slide, Incline Chain (31" Length)</b>		<b>2</b>
<b>503</b>	<b>25382</b>	<b>Slide, Rear Chain (85" Length)</b>		<b>2</b>
<b>504</b>	<b>28164</b>	<b>Wiper (Slide Floor)</b>		<b>1</b>
<b>505</b>	<b>29160</b>	<b>Chain Guard</b>		<b>1</b>
<b>506</b>	<b>29163</b>	<b>Cross Conveyor Seal 4" x 51 1/2"</b>		<b>1</b>
<b>507</b>	<b>27216</b>	<b>Sprocket Guard</b>		<b>2</b>
	<b>26231</b>	<b>Sprocket Shield (metal)</b>		<b>2</b>
	<b>26231B</b>	<b>Sprocket Shield (UHMW)</b>		<b>2</b>
<b>BELT:</b>				
<b>510</b>	<b>29147</b>	<b>Conveyor Belt Giant Z 12"x 120"</b>		<b>1</b>

## HYDRAULIC DIAGRAMS

<u>ITEM#</u>	<u>PART#</u>	<u>DESCRIPTION</u>	<u>SERIAL#</u>	<u>REQD</u>
--------------	--------------	--------------------	----------------	-------------

750---

### John Deere Tractor Load Sense Kits, Closed Center Systems:

John Deere 6510 L Load Sense "Kit"		DWG #27480	Page 20
John Deere 6520 L Load Sense "Kit"		DWG #27960	Page 21
John Deere 6030 Load Sense "Kit"		DWG #28350	Page 22

### Closed Center Loads Sense Systems for Reservoir Cart:

Augers , Runner Valve, Load Sense, Closed Center.	DWG 27050C-JD	Page 23
Draper Top, Runner Valve, Load Sense, Closed Center	DWG 27050K-JD	Page 24
Desticker with closed center system	DWG 29100G	Page 24

See Owner Operator's Manual for other hydraulic systems diagrams.

# HYDRAULIC SCHEMATIC

ITEM#      PART#      DESCRIPTION      SERIAL#      REQD

TO LS PORT ON PUMP

TO LS PORT ON VALVE

TO PRESSURE FREE RETURN

0.343 HOLE ORIFICE FOR 20GPM FLOW  
MODIFY MJ MP 12-12  
DWG.#27479

19	BO	SHUTTLE VALVE#LSV1-6T	1	
18	BO	6MM X 15MM LG. BOLTS	2	NOT SHN.
17	BO	1 3/4 MUFLER CLAMP	2	NOT SHN.
16	27476	VALVE MTG.	1	NOT SHN.
15	BO	4G2-6FJX-4FFORX90S-21 1/2"L	1	
14	BO	12M3K 12FJX 12FJX90-18 1/2"L	1	
13	BO	12M3K 12FJX 12FJX90-27"L	1	
12	BO	BALL VALVE # MBV-12N	1	
11	BO	MM MJ90 12-4	0	
10	BO	MM MJ 14-6	1	
9	BO	MB FJX90 6-6	1	
8	BO	MB MJ90 6-6	1	
7	BO	MB MP 6-6	1	
6	BO	NS 371 6FP F.Q.L.	1	
5	BO	MJ MP90 12-12	1	
4A	27479	MJ MP 12-12-.343	1	
4	BO	MJ MP 12-12	1	
3	BO	#4050-5 FMQC	2	
2	BO	MP FJX 12-12	1	
1	BO	MM MJ 22-12	2	

A				JD	1
ITEM	CHANGE	DATE	NEXT ASSY.	MODEL	QTY.
<b>JACK RABBIT</b> 471 INDUSTRIAL AVE RIPON, CA. 95366					
SCALE: NONE		APPROVED BY:		DWG. BY: N.P.	
DATE: 8/5/02		TOLERANCE: #1/16 DEG: #1/2°		REV. DT. 4/5/06	
JD 6510 L HYD.					
					DWG. # <b>27480</b>

04/05/2007 16:27 1  
JACKRABBIT  
PAGE 01

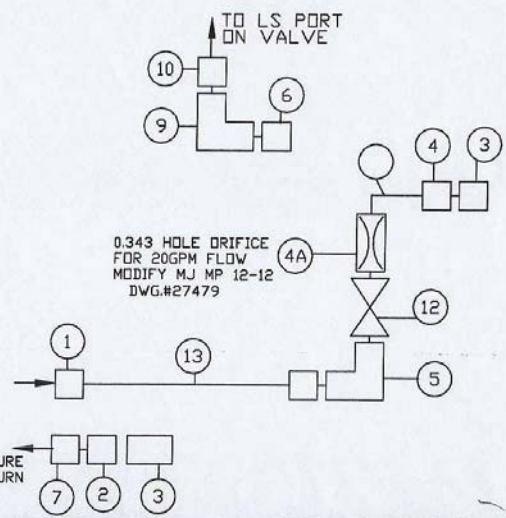
# HYDRAULIC SCHEMATIC

ITEM#      PART#      DESCRIPTION      SERIAL#      REOD

18	BO	6MM X 15MM LG. BOLTS	2
17	BO	1 3/4 MUFFLER CLAMP	2
16	27476	VALVE MTG.	1
15			
14	BO	12M3K 12FJX 12FJX90-18 1/2"L	1
13	BO	12M3K 12FJX 12FJX90-27"L	1
12	BO	BALL VALVE # MBV-12N	1
11			
10	BO	MM MJ 14-6	1
9	BO	MP FJX90 6-6	1
8			
7	BO	MM FP 27-12	1
6	BO	NS 371 6FP F.Q.L.	1
5	BO	MJ MP90 12-12	1
4A	27479	MJ MP 12-12-.343	1
4	BO	MJ MP 12-12	1
3	BO	#4050-5P FMQC	2
2	BO	MP MP 12-12	1
1	BO	MM MJ 22-12	1
ITEM	DWG#	DESCRIPTIONS	QTY.

NOT SHN,  
NOT SHN,  
NOT SHN,

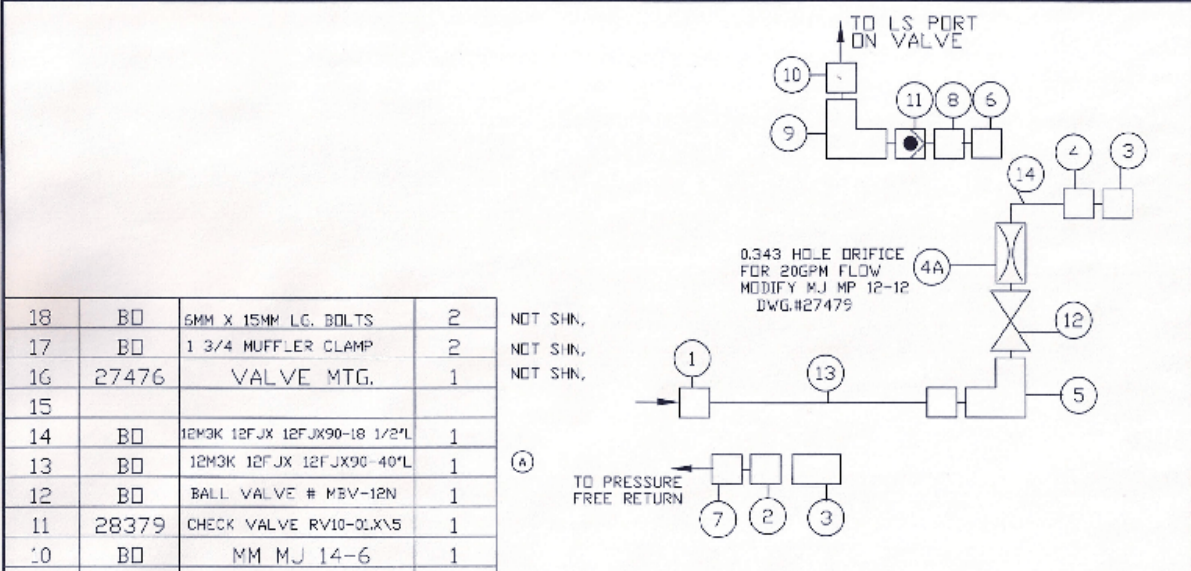
TO PRESSURE  
FREE RETURN



A				JD	1
ITEM	CHANGE	DATE	NEXT ASSY.	MODEL	QTY.
JACK RABBIT			471 INDUSTRIAL AVE RIPON, CA. 95366		
SCALE: NONE		APPROVED BY:		DWG.BY: N.P.	
DATE: 3/29/06		TOLERANCE: ±1/16 DEG: ±1/2°		REV.DT.	
JD 6520 L HYD.					
					DWG. # <b>27960</b>

# HYDRAULIC SCHEMATIC

ITEM#      PART#      DESCRIPTION      SERIAL#      REOD

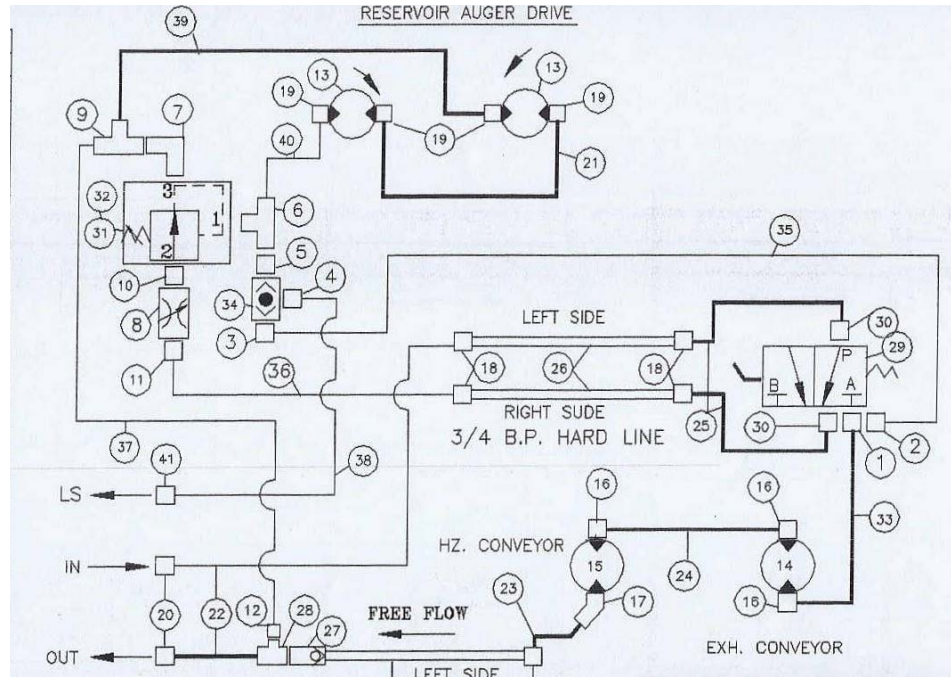


18	BD	6MM X 15MM LG. BOLTS	2
17	BD	1 3/4 MUFFLER CLAMP	2
16	27476	VALVE MTG.	1
15			
14	BD	12M3K 12FJX 12FJX90-18 1/2"L	1
13	BD	12M3K 12FJX 12FJX90-40"L	1
12	BD	BALL VALVE # MBV-12N	1
11	28379	CHECK VALVE RV10-0LXV5	1
10	BD	MM MJ 14-6	1
9	BD	MP FJX90 6-6	1
8	BD	MP MP 6-6	1
7	BD	MM FP 27-12	1
6	BD	NS 371 6FP F.Q.L.	1
5	BD	MJ MP90 12-12	1
4A	27479	MJ MP 12-12-.343	1
4	BD	MJ MP 12-12	1
3	BD	#4050-5P FMQC	2
2	BD	MP MP 12-12	1
1	BD	MM MJ90° 27-12	1
ITEM	DWG#	DESCRIPTIONS	QTY

8,11	ADDED	4/14/09		JD	1
A	WAS 27"L	9/5/08			
ITEM	CHANGE	DATE	NEXT ASSY.	MODEL	QTY.
<b>JACK RABBIT</b>			471 INDUSTRIAL AVE RIPON, CA. 95366		
SCALE: NONE		APPROVED BY:		DWG.BY: N.P.	
DATE 7/28/03		TOLERANCE=1/16 DEG=1/2°		REV.DT.4/14/09	
JD 6030 SERIES TRACTOR HYD.					
					DWG. # <b>28350</b>

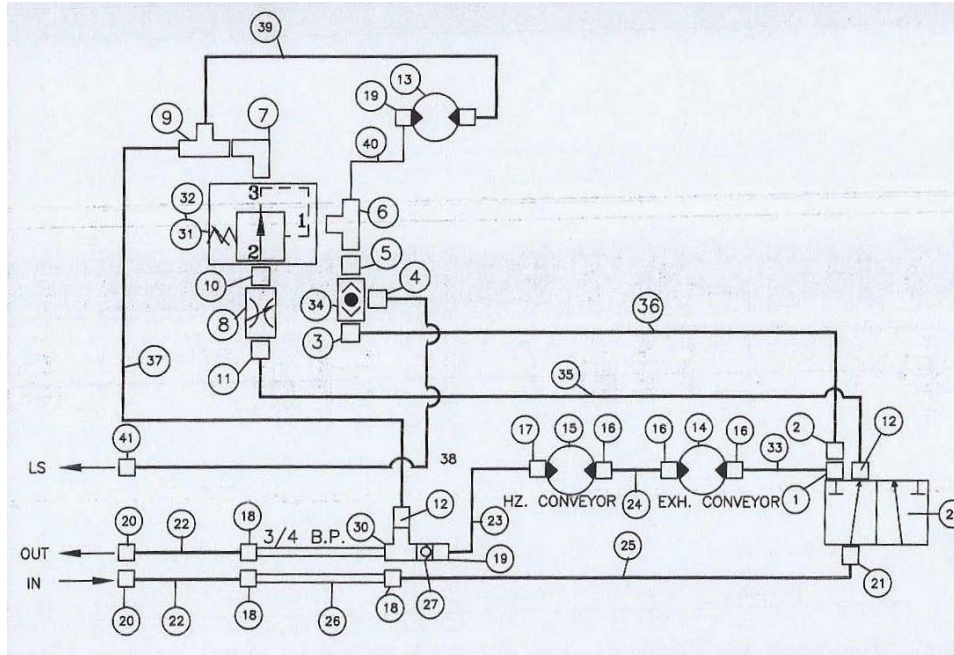
**\HYDRAULIC SCHEMATIC**

ITEM#	PART#	DESCRIPTION	SERIAL#	REQD
-------	-------	-------------	---------	------



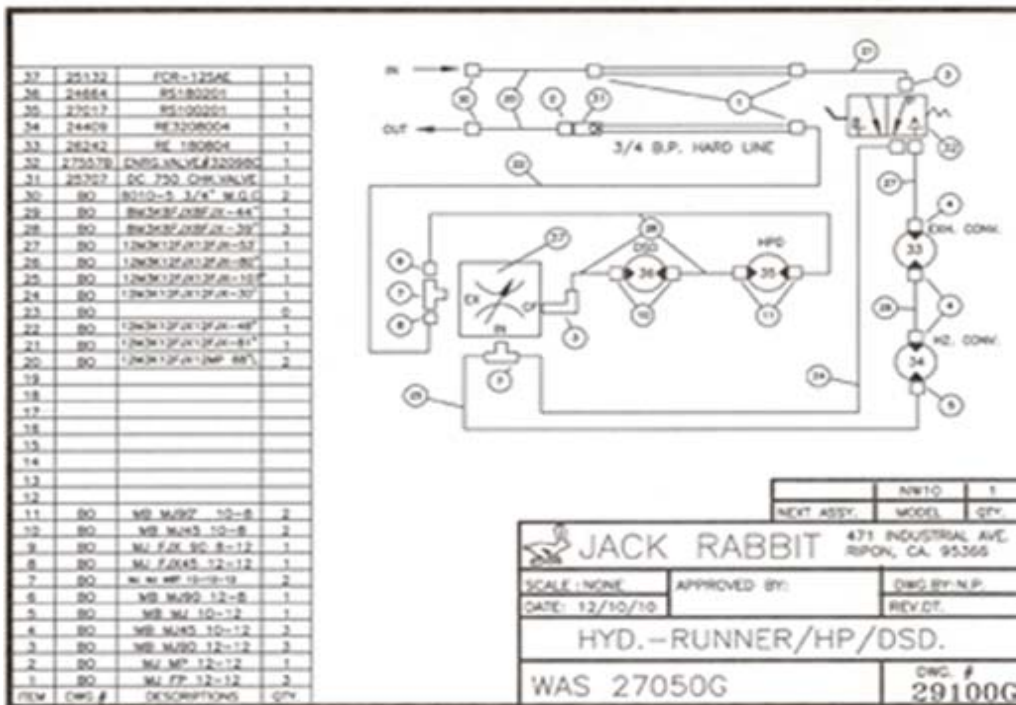
**DWG #27050C-JD Augers, Runner Valve, using one set of remotes on tractor, closed Center System when load sense line is connected to pump and the knob is Rotated clockwise to the stop.**

**Open center system with load sense line blocked and knob Rotated Countered clockwise to the stop.**



**DWG #27050K-JD Draper Top with Runner Valve and load sense system, using one set of remotes on the tractor with the load sense line connected to the pump and the knob is Rotated clockwise to the stop.**

**Open center system with load sense line blocked and knob Rotated Countered clockwise to the stop.**



**DWG 29100G Desticker with closed center system using one set of remotes on the tractor.**