



471 INDUSTRIAL AVE.
RIPON, CALIF. 95366
PHONE (209) 599-6118

JACKRABBIT

OWNER'S OPERATOR'S MANUAL

STICK JACK WINDROW DESTICKER



MODEL SJ 10

Phone (209) 599-6118 Fax (209) 599-6119
E-Mail sales@jackrabbit.bz or info@jackrabbit.bz

3/23/11

TO OUR CUSTOMERS:

Thank you for choosing JACKRABBIT. We stand behind our products and are very proud of the equipment we design and manufacture. Preventive maintenance is the easiest and least expensive type of maintenance. Please take the time to review this Owner's Operator's Manual it can save you time and expense.

WARRANTY

JACKRABBIT warrants each new piece of equipment and parts manufactured by it to be free from defects in material and workmanship under normal use and service. The obligation of JACKRABBIT shall be limited to replacing any part which shall, within 1 year (1 season) after delivery to the original purchaser, be returned to JACKRABBIT with transportation charges prepaid and which an examination by JACKRABBIT discloses defective. This Warranty does not obligate JACKRABBIT to bear the cost of labor, travel time or hauling in connection with the replacement or repair of the defective parts and in no event will be liable for consequential damages including but not limited to loss of crop, rental or substitute equipment or other commercial loss.

No warranties or representations made by persons other than representatives of JACKRABBIT expressly authorized in writing to do so shall be valid and binding upon JACKRABBIT. No dealer shall be authorized to bind JACKRABBIT in this respect.

JACKRABBIT makes no warranty with respect to component parts not manufactured by JACKRABBIT. This warranty shall not apply to any equipment which has been altered in any way outside of manufacturer's factory, or which has been subject to misuse, neglect or accident.

This warranty is expressly in lieu of all other warranties and representations, expressed, implied, or statutory, including warranties of merchantability and fitness for a particular use, and all other liabilities or obligations on the part of JACKRABBIT, foreseeable or not.

USER'S RESPONSIBILITY

It is the responsibility of the user to read the Operator's Manual and understand the safe and correct operating procedures as pertains to the operation of the product and to lubricate and maintain the product according to the maintenance schedule in the Operator's Manual.

WARRANTY SERVICE

Warranty service may be obtained through an authorized dealer or JACKRABBIT service facility. Write or call: JACKRABBIT, 471 Industrial Ave, CA 95366, telephone (209) 599-6118

TABLE OF CONTENTS

	Page
A. Safety Instructions	1 - 2
B. Specifications	3
C. Controls, and Valves	4
D. Operating Procedures	5 - 6
E. Maintenance Procedures and Schedule	7
F. Systems Diagrams	8 - 9
G. Trouble Shooting	10
H. Service Parts	11 - 14

SECTION A SAFETY INSTRUCTIONS

IMPORTANT SAFETY NOTICE

Improper practices or carelessness can cause bodily injury or death.

Always instruct the operator in proper operating procedures. The operator must read and understand all safety instructions in the Owner's – Operator's Manual and those placed on the STICK JACK.

SAFETY INSTRUCTIONS

- 1. Warning: Make sure all guards are in place prior to using the STICK JACK .**
- 2. Warning: No riders.**
- 3. Warning: Make sure all personnel are clear of the STICK JACK prior to starting the harvester or tractor engine.**
- 4. Warning: Stop tractor engine prior to adjusting conveyor chains or doing other service work on the STICK JACK.**
- 5. Warning: Stop tractor engine prior to clearing material from conveyors or the Desticker.**
- 6. Warning: Always wear protective eye goggles when checking for hydraulic leaks. Do not check hydraulic lines for leaks with your hands. High pressure oil leaking through a small hole will penetrate the skin. This will cause serious bodily injury or death.**
- 7. Warning: Always use a suitable tow vehicle. The vehicle must be designed to tow a unit weighing 4,000 lbs at speeds up to 55 mph.**
- 8. Warning: Never tow the STICK JACK at speeds above 55 mph.**
- 9. Warning: Never tow the STICK JACK on a public road or highway at night without lights.**
- 10. Warning: Always use a safety chain when towing the STICK JACK.**
- 11. Caution: Always check tires for damage and proper inflation prior to towing.**
- 12. Caution: Always replace safety labels and signs if they become illegible.**

INSTRUCCIONES DE SEGURIDAD

AVISO IMPORTANTE DE SEGURIDA

Uso incorrecto o descuido puede causar lesiones o muerte.

Sempre ensene al operador el procedimiento propio de operacion. El operador debe de leer y entender todas las instrucciones de seguridad en el manual de operacion y las reglas puestas en el STICK JACK.

INSTRUCCIONES DE SEGURIDAD

1. **Advertencia:** Este seguro que las guardias esten en su lugar antes de usar el STICK JACK.
2. **Advertencia:** No lleve pasajeros.
3. **Advertencia:** Este seguro que todo el personal este alejado de el STICK JACK antes de empezar la cosechadora o el motor del tractor.
4. **Advertencia:** Pare la cosechadora o el motor del tractor antes de ajustar las cadenas del transporte o antes de hacerle servicio el STICK JACK.
5. **Advertencia:** Pare la cosechadora o el motor del tractor antes de limpiar el material o basura del transporte o el quita palos.
6. **Advertencia:** Siempre use lentes de proteccion cuando revise goteras de aceite hidraulico. No revise las goteras de lineas hidraulicas con sus manos. Goteras de aceite con presion alta puede penetrar la piel. Esto puede causar heridas al cuerpo la muerte.
7. **Advertencia:** Siempre use un vehiculo de remolque apropiado. El vehiculo debe de estar disenado para remolcar la unidad que pesa 4,000 libras a velocidades arriba de 55 mph.
8. **Advertencia:** Nunca remolque el STICK JACK a velocidades arriba de 55 mph.
9. **Advertencia:** Nunca remolque el STICK JACK en caminos publicos o carreteras de noche sin luces.
10. **Advertencia:** Siempre use cadenas de seguridad cuando remolque el STICK JACK.
11. **Advertencia:** Siempre revise las llantas por danos y inflacion propia antes de remolcar el STICK JACK.
12. **Advertencia:** Siempre reemplaze las etiquetas de seguridad y letreros si estan ilegibles.

SECTION B
SPECIFICATIONS

Belt width	40”
Desticker Chain width	36 -5/8”
Drives (belt & desticker chain)	Hydraulic motors
Length	18’ – 6” overall
Width	8’-6”
Height	6’ – 10” top of stick conveyor
Weight Empty	3260 lbs
Tires	27 x 9.50 – 15/ 8 DEL/TL
Hydraulic Oil	Hydraulic oil used in the tractor
Stick Unload Options	Left or right side (Electric over Hydraulic)

The STICK JACK windrow desticker hydraulic requirements:

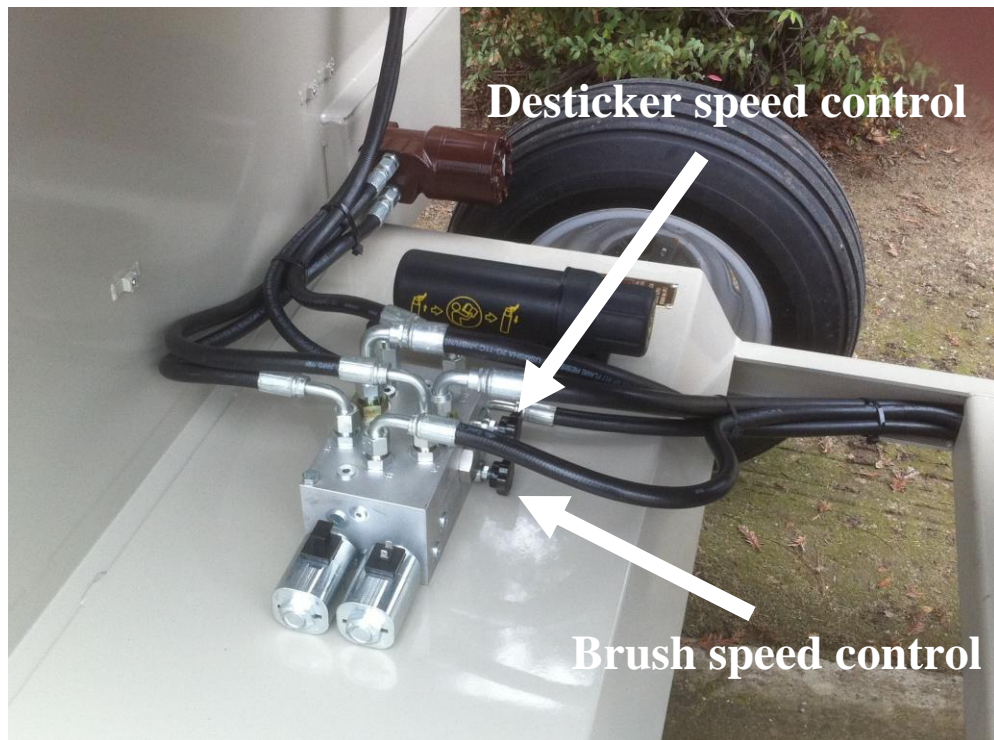
- 1. The hydraulic system: open center system.**
- 2. The hydraulic requirements: 10 gpm flow max @ 1500 psi.**

All specifications are subject to change without notice. For further information call JACKRABBIT at (209) 599-6118.

SECTION C CONTROLS AND VALVES

1. The **STICK JACK** is turned on & off by the tractor's hydraulic remote on – off lever.
2. The stick unloading belt is turned on - off and left or right by the electric switch mounted on the tractor.
3. Desticker chain speed control valve and ground brush speed control valve is located on manifold between rear tires

NOTE: The system pressure relief valve is set at the plant.



SECTION D OPERATING PROCEDURES

Do not allow anyone to operate the STICK JACK windrow desticker who has not been properly trained in its safe operation.

Prior to operation the following items must be checked and/or adjusted to obtain maximum performance and avoid necessary wear and stoppages:

- 1. Check and adjust stick spring pickup finger height if necessary.**
- 2. Check desticker chain. It should not have excessive sag or broken spring fingers. Adjust desticker chain as required.**
- 3. Check stick belt conveyor for damage and proper tension.**
- 4. Run the desticker chain checking alignment on drive and idler sprockets. Adjust desticker chain and ground brush speed if necessary.**
- 5. Run the stick unloading belt to the left and right checking its operation.**
- 5. Check tire pressure.**
- 6. Check hydraulic system for leaks and proper connections.**
- 7. Replace all safety shields and guards before using.**

STICK CONVEYOR CHAIN ADJUSTMENTS INSTRUCTIONS

Adjust the tension of the stick conveyor chain at the tail shaft at the rear of the conveyor.

The tension of the conveyor chain should be tight enough to prevent excess sagging. Chain tension is maintained by adjusting bolts that slide the sprocket shaft bearings in the forward and reverse directions. All adjustments should be made in small increments with the chain run 1-2 minutes between adjustments.

- 1. To increase conveyor chain tension: Loosen bearing hold-down bolts on idler pulley shaft. Turn adjustment bolts on each side of belt an equal amount increasing chain tension. Re-tighten bearing hold-down bolts.**
 - A. Run conveyor chain checking for correct tension and alignment.**
 - B. Readjust if necessary.**

TOWING

The STICK JACK windrow desticker is designed to be towed by a tractor in an orchard environment.

When the STICK JACK windrow desticker is towed on a highway, all local state laws and regulations must be observed. The vehicle used to tow the STICK JACK windrow desticker must be designed to tow a 4000 Lb. trailer without brakes. DO NOT EXCEED 55 MPH.

A safety chain must be used when towing the STICK JACK windrow desticker.

DAILY OPERATION

The height of the spring pickup fingers is adjusted to the desired height by adjusting the gauge wheels. The pickup fingers should rake the windrow but NOT tear up the ground below the nuts.

The STICK JACK windrow desticker is pulled over and lowered onto the windrow and the hydraulic system is then turned on.

The tractor then moves forward at a ground speed of 2 – 4 mph depending on the conditions.

At the end of the windrow, the tractors forward motion is stopped, the STICK JACK windrow desticker is raised above the windrow and is turned off.

A turn is made either left or right and the tractor stops to unload the sticks. The system and stick belt is turned on discharging the sticks (either left or right) until the bin is empty.

The tractor turns onto the next windrow to be desticked, and the process is repeated.

SECTION E MAINTENANCE PROCEDURES AND SCHEDULE

CAUTION: Do not over grease bearings. Over greasing can damage seals and actually cause an increase in internal friction.

DAILY MAINTENANCE

- 1. Check the general condition of the STICKJACK windrow Conditioner for hydraulic leaks, loose bolts, worn or damaged parts.**
- 2. Replace all safety guards and shields removed for maintenance and all worn, damaged or illegible labels.**

YEARLY MAINTENANCE

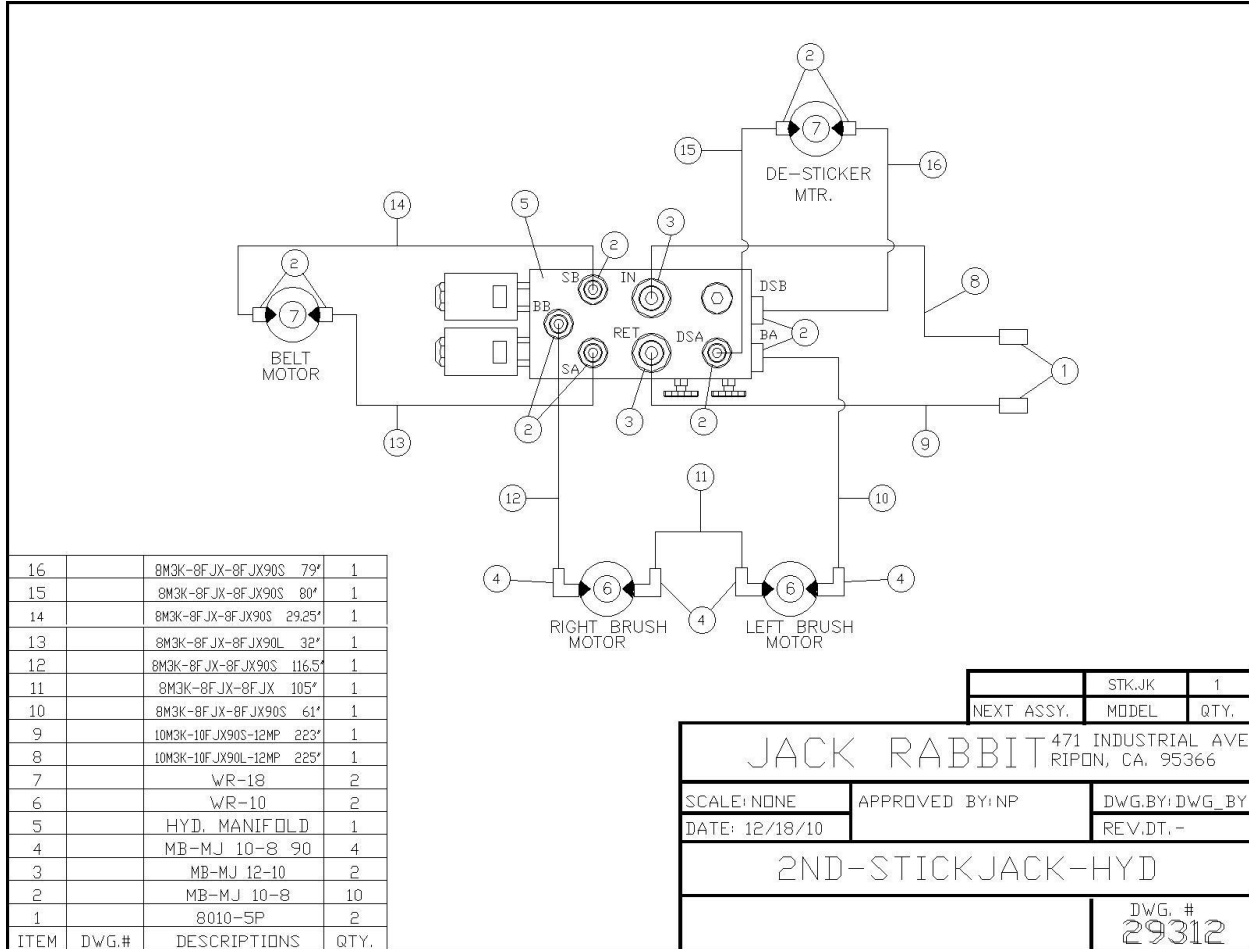
- 1. Lube conveyor chain bearing (Do not over grease bearings). Use Lithium Base NGL 1 or NGL2 grease.**
- 2. Check and repair worn or damaged parts.**
- 3. Replace all worn, damaged or illegible labels.**

STORAGE OFF SEASON

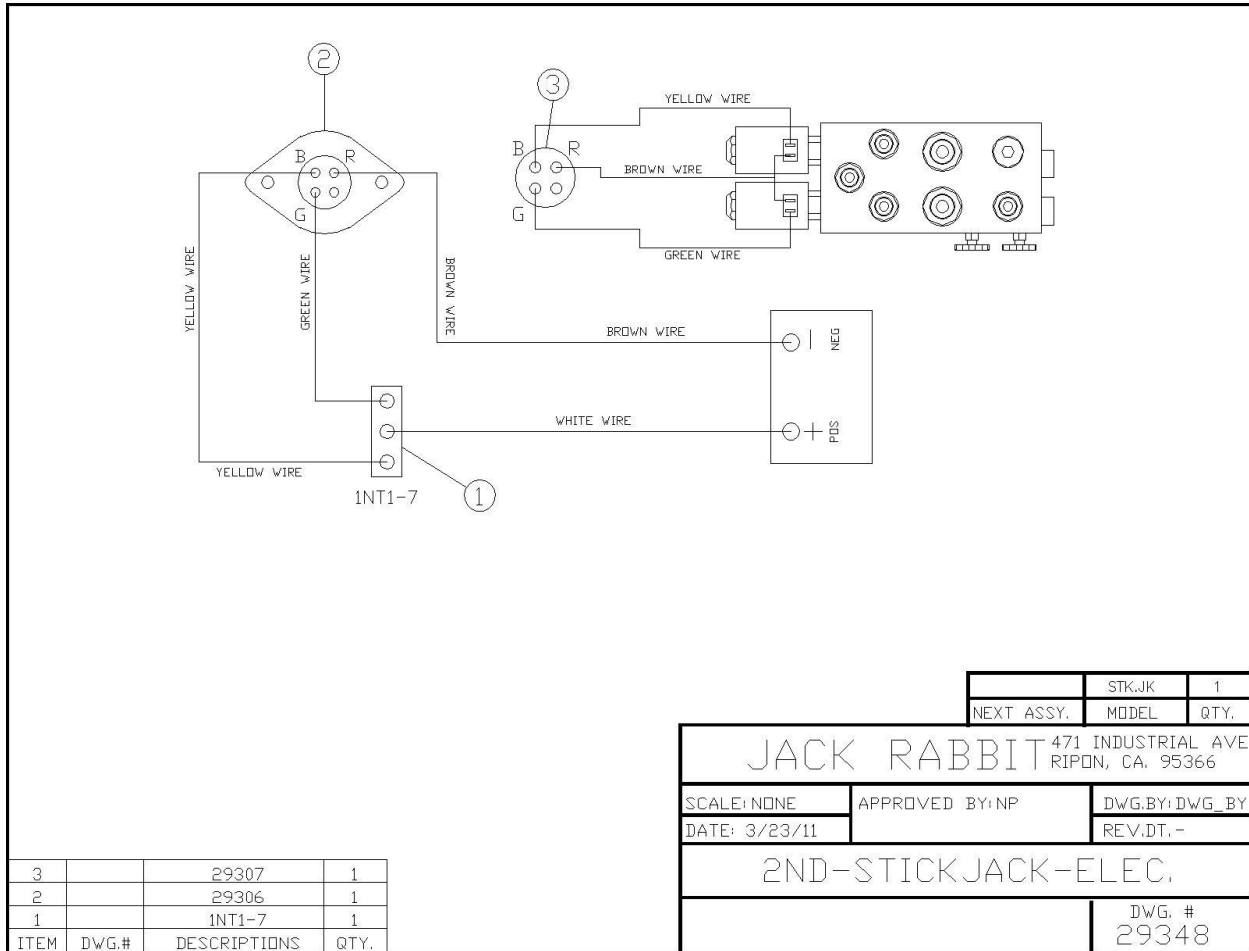
- 1. Wash and clean chassis.**
- 2. Air tires to specifications shown on tire.**
- 3. Adjust conveyor chains if necessary.**

SECTION F SYSTEM DIAGRAMS

HYDRAULIC SYSTEM



ELECTRICAL SYSTEM



**SECTION G
TROUBLE SHOOTING**

The following is a list of problems that may occur, and some possible causes and remedies. If the solution to a problem is not apparent, contact your JACKRABBIT dealer or JACKRABBIT direct. Phone (209) 599-6118 or Fax (209) 599-6119.

Warning: Do not check for hydraulic leaks with your hands. The high pressure in these lines will penetrate the skin and cause serious personal injury.

Problem	Cause	Action
Conveyor chain will not move – stuck	Stick is in chain link	Stop tractor engine. Turn conveyor in reverse with a bar. Remove stick
Conveyor chain too slow	Hydraulic oil flow GPM too low	Increase flow by turning the flow control valve to a higher number
Windrow scattered at side or both sides	Brushes too high or brush rpm too slow	Adjust brush height and increase rpm by turning flow control valve to a higher number

**SECTION H
SERVICE PARTS**

ITEM#	PART#	DESCRIPTION	SERIAL#	REQ
CHAINS:				1---
1	29280	Desticker Chain Assembly Complete		1
2	25573	CA557 Roller Chain with A1 Attachment (1 ft.)		1
3	27142	Master Link (CA557) with A1 Attachment		4
4	27141	Master Link (CA557) without A1 Attachment		4
5	29248	Spring Finger 5-1/4"		280
6	29248A	Spring Finger 6-3/4"		280
7	29259	Desticker Flight DOM Tube only 3/4" X 36 5/8"		93
8	29263	Spacer Tube A-3/4" BP -2"		47
9	29285	Spacer Tube B-3/4" BP - 4 3/16"(weldment)		280
10	29281	Repair bar (weldment) 42 1/2"		1
11	27253	#50 Roller Chain, per ft. (stick belt drive)		1
12	27253A	#50 Master Link		2
SPROCKETS :				
20	26585	11T 550 (1 1/4" Bore)		2
21	29246	11T 550 PL (1" Bore) (bearing pressed in) (front idler)		2
22	22983	8T 550 Idler (5/8" Bore)		16
23	29201	6T Eccentric Sprocket		4
24	29201A	6t Concentric Sprocket		4
25	28690	11 Tooth - 50B11 1" Bore Sprocket		1
SHAFTS:				
40	29223	Drive Shaft 1 1/4" X 48 1/8"(desticker chain)		1
41	28768A	Idler Shaft 1" X 46 1/2" (stick belt pulley)	1	
42	28769A	Drive Shaft 1" X 48 3/4" (stick belt pulley)		1
BEARINGS:				
50	22096	Pillow Block (VAK 1 1/4")		2
51	22977	Pillow Block (VAK 1")		4
52	29313	1641 1" PRSS N Bearing (front sprocket)		2
53	26464	Bearing Pad		5
PULLEYS, COUPLERS & TORQUE ARMS:				
60	25735A	Climax Coupler (1" to 1 1/4") desticker chain motor		1
61	22986	1" welded hub (brush motors)		2
62	29288	Torque Arm		1
63	24417	Torque plate (desticker chain motor)		1
64	29265/66	Torque Arm (brush motors)		2
65	28727	Shim (motor mount, stick belt motor)		1

ITEM#	PART#	DESCRIPTION	SERIAL#	REQ
ELECTRICAL:				1---
90	28213	Momentary ON – OFF - ON Toggle Switch (1NT1-7)		1
91	29306	Trailer connector plug (71545-4)		1
92	29307	Trailer connector socket (71565-4)		1
93	29308	14Ga 4 wire insulated trailer cord per ft.		1
94	29308A	14Ga 2 wire insulated trailer cord per ft.		1

HYDRAULICS:

100	24664	Motor (RS18) or (WR18) (desticker & stick belt)		2
101	27017	Motor (RS10) or (WR10) (brush motors)		2
102	28379	Check Valve		1
103	29331	Hydra Force Manifold HF61395		1

See drawing 29312 for a complete list of hydraulic hoses, fittings and other parts (page 8).

MISCELLANEOUS PARTS:

150	29272	Rim		4
151	29250	Tire 27X9.50 – 15/8 DEL /TL		4
152	29270	Hub Assembly #W88B		4
153	29339	Front Stick Belt Seal A		1
154	29340	Front Stick Belt Seal B		1
155	29338	Rear Stick Belt Seal		1
156	29230A	Belly Pan		1
157	29310	Brush-Industrial Gr.		2
158	29240	Brush Mount		2
159	29265	Brush Motor Mount Right		2
160	29266	Brush Motor Mount Left		2

MISCELLANEOUS PARTS:

170	28686	Stick Belt 40" X 197" Giant Z		1
171	29269A	Front Skirt (rubber) 24 5/8" X 42-3/4"		1
172	23801	Side Wind Jack		1
173	29335A	UHMW 1/2" X 6-1/2" X 47-1/4" Slides		2
174	29335	UHMW 1/2" X 6-1/2" X 22-1/2" Slides		2
175	29311	Decal (STICK JACK by JACKRABBIT)		2
176	25750	Paint (touch up beige)		1

ITEM#	PART#	DESCRIPTION	SERIAL#	REQ
			1---	

